

ZM-9001

ZONE MANAGER

The ZM-9001 is a remote control switch panel used with the 9000 series amplifiers. It provides an additional 6 control inputs of amplifier expansion, and can be mounted in standard 1-gang electrical box in the wall.



Article number: ZM-9001
Alternative products: ZM-9002, ZM-9003

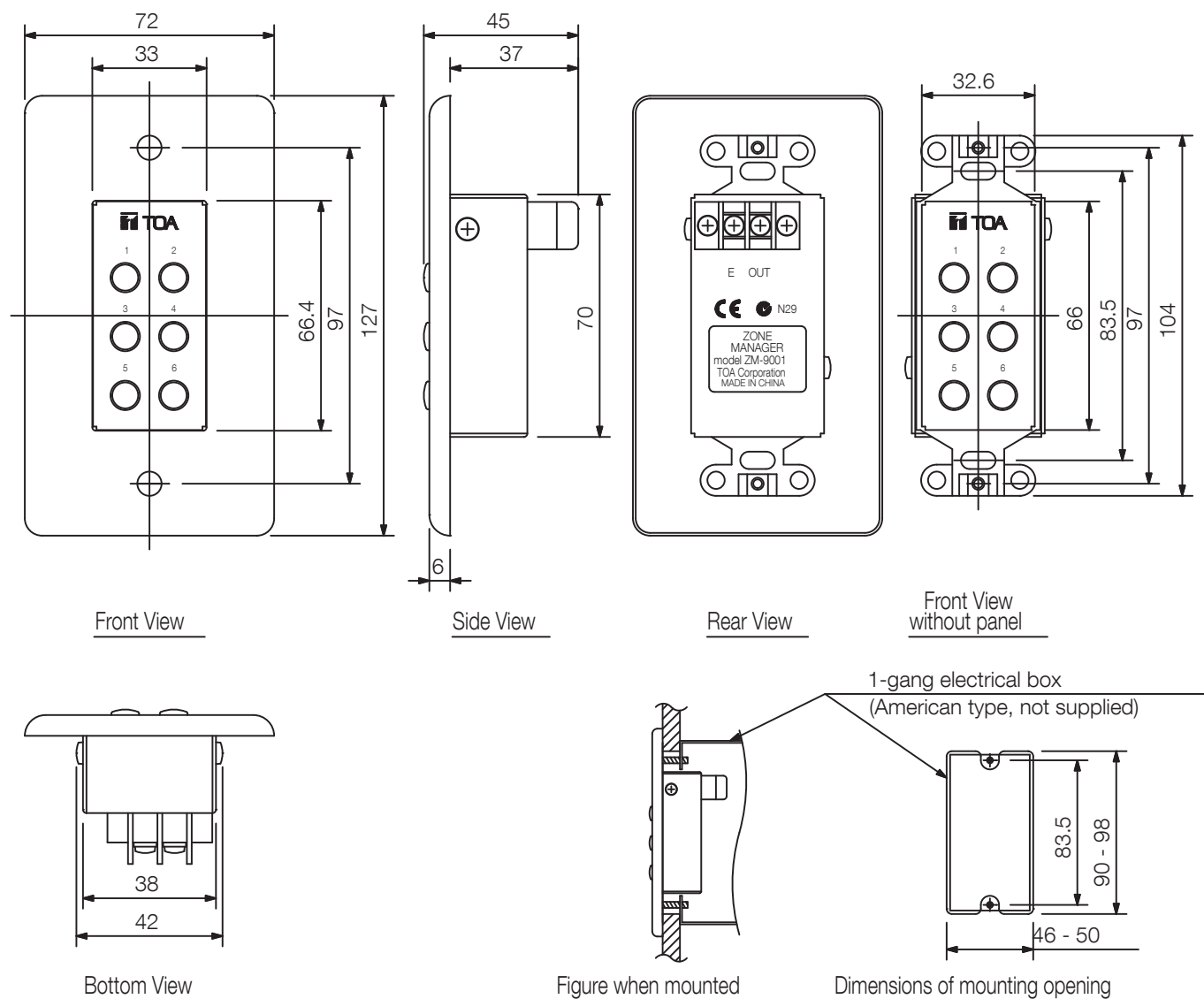
Specifications

Applicable cable	Single conductor shielded cable
Line resistance	50 Ω per line
Connection	M3 screw terminal, distance between barriers: 7.62 mm
Dimensions (W x H x D)	72 x 127 x 45 mm
Dimensions (ϕ x D)	x 45 mm
Finish	Steel plate, surface-treated, paint, white,

ZM-9001

ZONE MANAGER

Appearance



UNIT:mm SCALE:1/2