

Q-8

IP66 RGBW LED Flood / Pixel / Blinder / Strobe

The **DualSource™** all-rounder fixture



DualSource™

2 Independent Light Sources
Optimized Power Management



TruColor+™

High Color Rendering
Enhanced Color Engine



ThermalDrive™

Advanced Temperature Control
Hybrid Cooling



DryTech™

Integrated Patented Dehumidification
Active Moisture Removal



VersaPath™

Designer selectable color path
RGB mix over black body curve

IP66



CE



RoHS



Welcome to the next level



Performance meets functionality

One single luminaire with two punchy strobes, a high color rendering floodlight, and a direct-view blinder with pixel capabilities.

Imagine a blinder for an upstage wall on your popular music festival, specified as key lighting for film and broadcast applications. With the Q-8, you invest in one light that can do both and do both well. And at the end of the day, this IP66 fixture only needs a high-pressure shower before going back to the truck.

The SGM Q-8 is a **DualSource™** touring fixture that is made to the quality standards of a studio fixture. The evolution of the Q-7 brings to market a combined 52,675 lumens* strobe blinder, and a 51,771 lumens* studio-quality floodlight with TLCI 90+ (**TruColor+™**).

The Q-8: everything you liked, and more

You love everything about Q-7. It's flexible, it's easy to use, it looks nice. We can't reinvent what already works, but we can take it to the next level. The Q-8 inherits the durability of the P-6 and the innovation of the G-7 BeaSt in a versatile, high-quality **DualSource™** tool.

Superior performance, new features, advanced control.

What's new?

Double-tap strobe, segment controlled

The Q-8 implements 2 completely independent linear strobe blinders, based on G-7 BeaSt's LEDs. These powerful strobe blinders are located at the top and bottom of the floodlight section, keeping all the advantages of the Q series while delivering new effects and 8 controllable pixels. In addition, the Q-8 includes a new dual color strobe feature for the RGBW panel, allowing to strobe in a color while using a different color in the background. Two different light sources, double strobe effect, twice the fun.

2 color engines in the same luminaire

While keeping the characteristic SGM color mixing as the default configuration, the Q-8 brings added value with our brand new **VersaPath™**: a designer selectable algorithm for advanced control over color transitions. With SGM's **VersaPath™**, operators can warm up or cool down their mixed RGB colors over the black body curve, deciding themselves which dominant prevails when moving from one color to another. When combined with CTC, Q-8 users can also emulate color filters over a specific native color temperature or mimic the color path response of third-party RGB fixtures.

The next level on RGBW's applicability: **TruColor+™** high color rendering

With a calibrated CRI performance above 90 and a 95+ TLCI via RAW modes, the Q-8 is the first RGBW fixture to achieve this level of white reproduction when mixing all 4 LEDs. Thanks to our brand new **TruColor+™** technology, the Q-8 can deliver up to 47,232 lumens* at 5,500 K with excellent color rendition (CRI 96). Being already a great floodlight for close distances and medium-throws, the Q-8 color specs open a wide range of applications in different segments.

NextGen design platform

It takes a great team to be this reliable. With IP66 rating, a rock-solid head with integrated dehumidifier, and a sealed IP67 wet base, we have turned a long-lasting tool into a compact dual-purpose tank. This is the result of extensive research, in-house danish manufacturing, and ambitious product testing. The Q-8 users benefit from our next-gen **ThermalDrive™** control, our patented **DryTech™** system, and our 12 years of experience in all-weather lighting technology. We focus on building quality.

* All photometric values are verified peak measurements obtained with goniometer scan/SGM illumination lab 1.6.0.0.



Stage

Direct view effects

Mark is a highly-skilled Touring Operator. Each Q-8 brings him two completely independent strobe lights and a powerful color surface with pixel capabilities. He gets eye-candy effects, a close-distance wash, and two insanely bright blinders in just one standard-size fixture.



Omega brackets
With 1/4 turn fasteners



Filter diffusers & extender
5 magnetic frames



Flightcase (4 units)
Amptown-made premium SIP case



Theater

Symmetrical cyclorama

Aisha has 25 years of experience in theatrical applications. The Q-8 allows her to create deep saturated scenes in cycloramas and backdrops. Features such as the Q-8's extended dimming curves and **VersaPath™** color engine enhance her designs by allowing subtle color transitions and superior dimming.



Omega brackets
With 1/4 turn fasteners



4-way barndoors
4 adjustable flaps



8-way barndoors
8 adjustable flaps

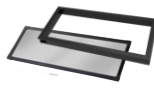
Studio

High TLCI softlight

Lisa works as a Cinematographer for several advertising agencies. When filming at the studio, the Q-8 gives her excellent color rendition, a versatile color temperature range, and a extensive frequency adjustment. On location, the Q-8's IP-66 rating, compact size, and wireless control are a huge plus.



DoPchoice Snapbag® & Snapgrid®
Soft lightbank & light spread control



Filter diffusers & extender
5 magnetic frames



Omega or 28 mm spigot
Combinable brackets

Architainment

Wide angle floodlighting

Juan designs outdoor events and short-term installations. He benefits from the Q-8's accurate color mixing, even distribution, and wide angle beam. The panel can be used for wall-washing and accent lighting, while the two strobe lines work great for projects that require high visibility and special effects.



Half anti-glare shield
Oxsilian coated



Full anti-glare shield
Oxsilian coated



POI brackets
Anti-corrosion mounting



A-4

The A-4 is a smart and compact node that allows RDM monitoring, show recording, scheduled playback, and remote network control of up to 132 Q-8s via 4 dedicated universes. The A-4 includes RJ45 and XLR 5-pin connectors and supports the ArtNet and sACN protocols. For studio applications, the A-4 can measure and report the average ambient temperature in the lighting rig, ensuring optimal LED thermal management for high-demanding camera setups.



USB UPLOADER CABLES

As part of its DNA, SGM offers frequent firmware updates for the whole product portfolio. Simple and compact, these USB to DMX cables enable updating of official firmware and channel by channel control of DMX values when used with the supplied SGM Firmware Tool software. While suitable for Q-8, the USB uploader cable applies to any SGM luminaires with DMX physical connections, while the USB uploader cable POI is intended for bare ends DMX cables.

POWER CABLE WITH IP CONNECTOR



Every Q-8 includes in its packaging a power cable, specifically tested to comply with the IP-66 rating. To ensure optimal all-weather protection, SGM recommends the use of this AC cable with lockable 3-pin / 16A-rated connector in all SGM units with chassis connectors. The Q-8 does also include a power-thru chassis connector, allowing to daisy chain more than one unit in the same circuit.

VACUUM TEST KIT



The Q-8 includes the SGM's patented **DryTech™** system, based on active dehumidifiers and integrated ePTFE membranes. This hassle-free technology is fully maintenance free, but calls for testing in case the fixture is disassembled. The SGM Vacuum Test Kit is a calibrated service tool that verifies the IP-66 protection is still functioning after having reassembled the fixture in a user friendly, total guided setup. It is delivered in a robust flight-case, suitable for both touring and workshops.

Two powerful strobe blinders

52 high-output white 7,000 K LEDs
4 pixel segments with 8-bit and 16-bit control
Individual parabolic multi-reflectors
75° beam angle

High-TLCI RGBW LED panel

880 RGB LEDs and 880 white 5,700 K LEDs
4 pixel segments with 8-bit and 16-bit control
High CRI and high TLCI (>90)
RGBW dual color strobe feature

Wide angle spread

110° beam angle
Optimized look for direct view
Optional SNAPGRID® and SNAPBAG®
Optional magnetic filter frames

All-Weather IP66 design

Integrated dehumidifier and ePTFE membrane
Humidity and heat sensors with smart control
RDM remote monitoring



Full control over effects and color features

7 **DualSource™** macros with speed control
2,000 K to 10,000 K Color Temperature Control
RGBW, CMY, HSI and XY in calibrated and RAW modes
DMX-configurable standard path and **VersaPath™**

Superior dimming performance

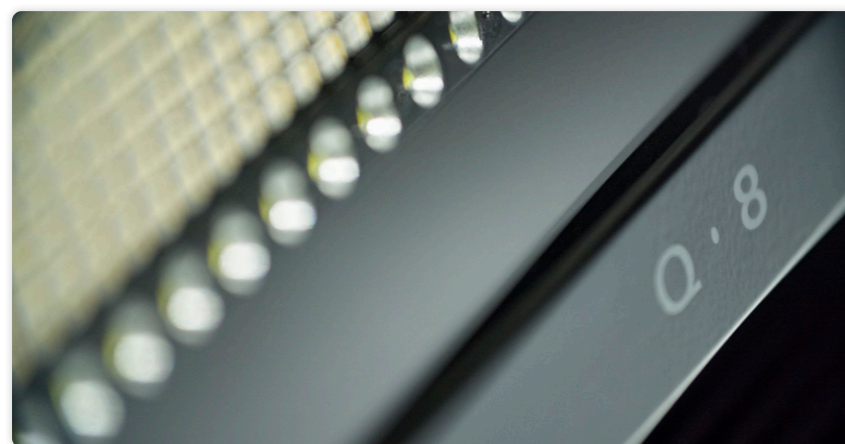
3 master intensity channels
12 dimming curves including low-end extended range
Optimized low-end dimming

Studio features

Extensive frequency control over DMX
0 - 100% fan speed control
Color filter emulation and plus/minus green

Multiple and reliable connections

IP66 power in and power thru chassis connectors
IP67 5-pin DMX chassis connectors
Wireless DMX and RDM via LumenRadio transceivers



High power LEDs with individual parabolic reflectors



Tilt-locks with angle indicator



Handle and OLED display on top



Expanded versatility

The Q-8 is here. As in any other family, the last to arrive inherits the values that have made the saga great: adaptability, efficiency, design; our sustainable formula to generate return on investment. Apart from being the first **DualSource™** in the series, the Q-8 is a fixture that draws on SGM culture and DNA.

Built tough, well thought, All-Weather.

The Q-2. A compact underdog ▶



◀ The Q-7. Needs no introduction



The Q-10. Hell yeah!!! ▶



POI Option available

Designed for Permanent Outdoor Installations, the POI product package is specifically developed for durability and endurance in harsh environments. All POI Fixtures include IP66 rating, C-5M marine protection, 5 year warranty and **DryTech™** technology.

Lightsource 1 (panel)

Light source	880 RGB LEDs and 880 white LEDs (5,700 K)
Max output	51,771 lumens
Efficacy	98 lumens / watt
Beam angle	108°
Pixel control	4 individually controllable segments, 16 bits
Dimming	16 bit, 12 DMX-controllable dimming curves
Strobe control	Intensity, duration, rate, effect, RGBW strobe (background control)
Max power consumption	592 W
LED expected lifetime	> 50,000 hours
LED frequency adjustment	3.1 Khz - 30 Khz, plus 7 high-speed presets (up to 2,000 fps)
Color temperature range	2,000 K - 10,000 K
Color features	2 color paths (standard / VersaPath™), filter emulation, 16 bit
Color modes	RGB CTC, RGBW CTC, RGB+W CTC, HSI, CMY, XY
Color rendering, typical (calibrated)	CRI > 90 / TLCI >90 (above 4,900 K)
Color rendering, max (RAW)	CRI 95+ / TLCI 95+

Lightsource 2 and 3 (strobe blinders - combined figures)

Light source	52 high-power white LEDs (7,000 K)
Max output	52,675 lumens
Efficacy	96 lumens / watt
Beam angle	75.2°
Pixel control	4 individually controllable segments, 16 bits
Dimming	Electronic, 16 bit
Strobe control	Intensity, duration, rate, effect for each individual source
Max power consumption	548 W
LED expected lifetime	> 20,000 hours

General

Technical features	
Dehumidifier / ePTFE membrane	SGM DryTech™ on head
IP Class / IK Rating / Corrosion class	Standard version IP66 / IK06 / No corrosion treatment
	POI version IP66 / IK06 / C5-M (ISO 12944)
Safety features	1 x retractile attachment point for safety wire

Programming and control	
Wireless control	LumenRadio wireless DMX and RDM (CRMX™, W-DMX™ G2-G4S)
DMX channels	9 DMX modes (6, 10, 12 x 2, 27, 34, 36, 41, 52)
Standalone modes	SGM Quick Color, 24 programmable scenes (Only Std. version)

Electrical	
AC power, Max / Nominal	90-305 v 50-60 Hz / 100-277 v 50-60 Hz
Power Supply Unit	Inbuilt IP67 Auto-ranging electronic switch-mode
Electrical protection	Overload protection with automatic recover

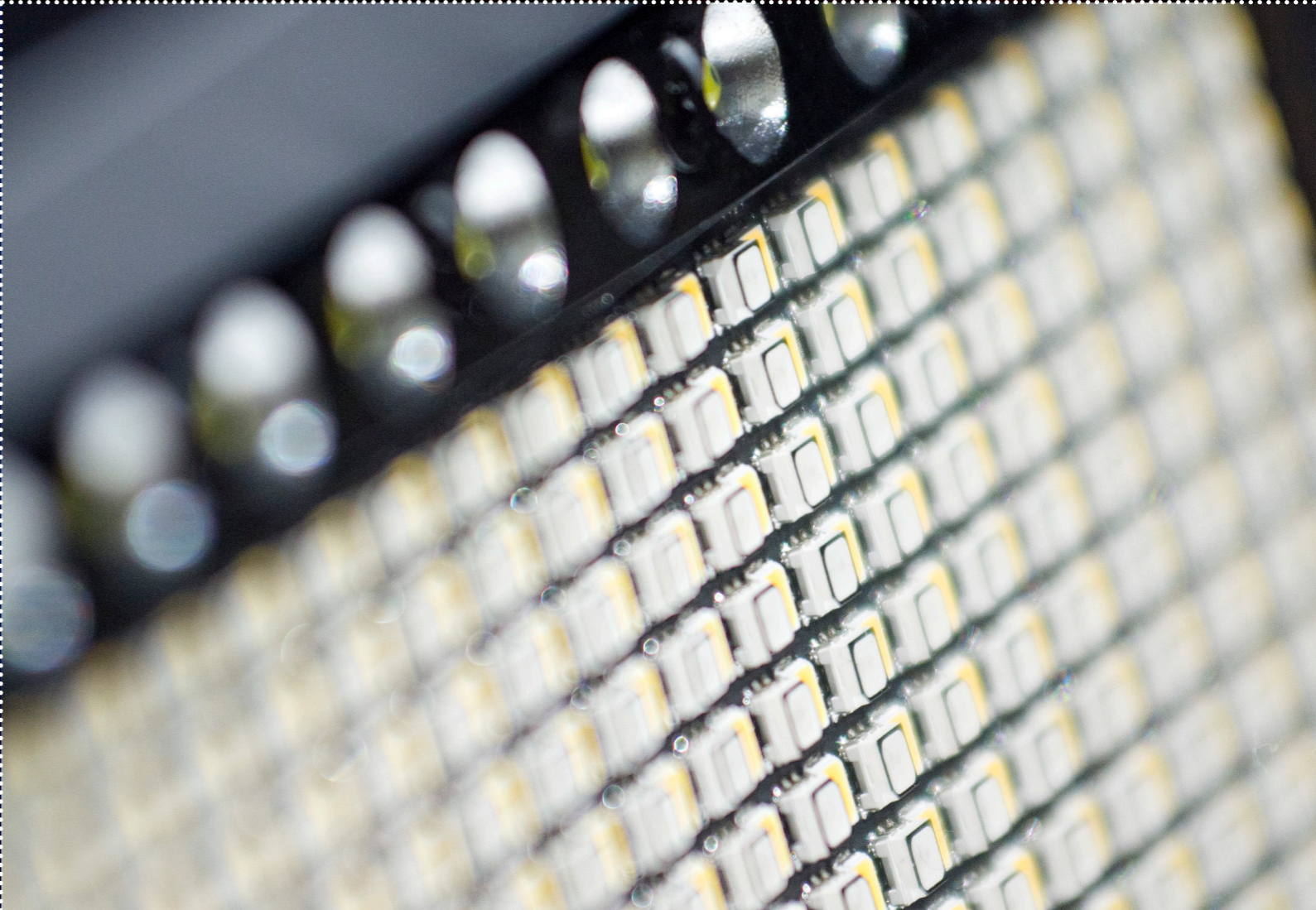
Connections		
Data connections (USITT DMX512A)	Standard version	IP67 XLR 5-pin connectors
	POI version	5 meter cable for DMX In and DMX Thru
Setting, addressing, and monitoring	Standard version	RDM ANSI E1.20; OLED Graphical display on head
	POI version	RDM ANSI E1.20 only
Power connections	Standard version	IP66 power input connector and link-thru
	POI version	Power cable 5 meter with bare ends

Thermal	
Thermal control	SGM ThermalDrive™ (active + passive cooling)
Max humidity	98%
Temperature range, operating	-40° to +50°C / -40° to +122°F
Temperature range, start-up	-20° to +50°C / -20° to +122°F
Temperature range, storage	-40° to +80°C / -40° to +176°F

Physical		
Tilt angle / tilt locks	Standard version	0° - 220° with scale indicator / adjustable wing knobs
	POI version	0° - 220° with scale indicator / pignose locks
Dimensions (L x W x H)	520 x 320 x 166 mm / 20.5 x 12.6 x 6.5 in	
Effective projected area	2.15 square feet	
Mounting points / Orientation	Standard version	3 x 2 ¼ turn locking points / Any orientation
	POI version	6 M-10 locking points / Any orientation
Total weight	13.5 kg / 29.8 lbs	
Color options	Black (RAL 9004), white (RAL 9010), custom RAL color	

Optional accessories	
Filter options	SGM magnetic easy-fit spread angle filters and extender
Accessory options	SGM 4-way and 8-way barndoors, SGM full and half anti-glare
	DoPchoice™ SnapBag® and SnapGrid®
Bracket options	SGM 28 mm spigot adapter, SGM POI omega brackets (M-10)

Certificates	
2014/35/EU: Low Voltage Directive	EN 60598-1, 60598-2-17, EN 62471, EN 60529
2014/30/EU: EMC Directive	EN 55103-1, EN 55103-2, EN 61000-3-2, EN 61000-3-3, EN 55015
RoHS2 Directive	2011/65/EU
CSA	CSA Std. C22.2 No. 166



Fixtures

Ordering number	Standard products	Ordering number	POI products
80031750	Q-8 Flood Strobe, Std, BL	80251750	Q-8 Flood Strobe, POI, BL
80031751	Q-8 Flood Strobe, Std, WH	80251751	Q-8 Flood Strobe, POI, WH
80031752	Q-8 Flood Strobe, Std, CU	80251752	Q-8 Flood Strobe, POI, CU

Accessories

Ordering number	Product
83061173	4-way barndoors for P-6/Q-8, medium, BL
83061186	8-way barndoors for P-6/Q-8, medium, BL
83061176	Full anti-glare shield, medium, BL
83061177	Full anti-glare shield, medium, WH
83061178	Half anti-glare shield, medium, BL
83061179	Half anti-glare shield, medium, WH
83061170	Filter frame for P-6 / Q-8 – medium angle
83061171	Filter frame for P-6 / Q-8 – wide angle
83061168	Filter frame for P-6 / Q-8 – elliptical horizontal
83061169	Filter frame for P-6 / Q-8 – elliptical vertical
83061189	DoPchoice Snapbag for Q-8
83061190	DoPchoice Snapgrid for Q-8
83061191	Filter frame extender for P-6 / Q-8

Brackets

Ordering number	Product
83060623	Omega bracket with ¼ turn bolts, BL
83061202	Omega bracket with ¼ turn bolts, WH
83060639	28 mm spigot adapter for omega bracket

Flight cases

Ordering number	Product
82051509	Flight case for 4 pcs of P-6 / Q-8 incl. accessories

Converters / RDM administrators

Ordering number	Product
80070217	A-4 Art-Net to DMX converter

Cables

Ordering number	Product
07860275	Power cable with IP connector
83062011	SGM USB uploader cable
83062067	SGM USB uploader cable, POI

Service tools

Ordering number	Product
83061136	Vacuum Test Kit

What is in the box

Standard*

- Q-8 fixture
- 1 IP66 power cable
- 1 Omega bracket
- Printed leaflet with safety instructions

*Please note the packaging for the fixtures does not include any other accessories like barndoors or filters. All these items are sold separately.

Permanent outdoor installation (POI) *

- Q-8 POI fixture
- 6 M-10 screws
- Printed leaflet with safety instructions

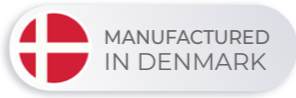
*Please note the packaging for the fixtures does not include any other accessories like brackets, antiglare shields, or filters. All these items are sold separately.

Important notes

- It is the responsibility of the installer / user to install and operate the Q-8 in a way that complies with all applicable codes and local laws.

Developed, manufactured and tested in Denmark

- Premium user-centered design
- Flexible manufacturing process
- Short reaction time; faster deliveries
- Integrated support (R&D / production / after-sales)





www.sgmlight.com