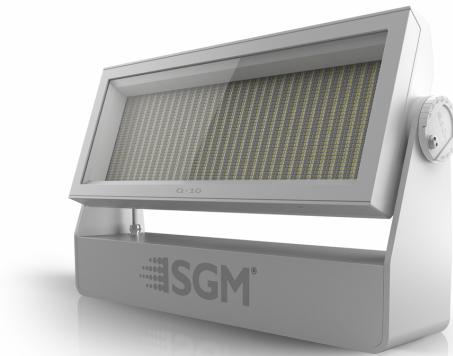




Q-10 POI

RGBW LED Wash light



Description

SGM's Q-10 POI is a unique and extremely powerful IP66-rated outdoor LED wash light, ideally suited for architectural applications with high demands, where very high-power wide effects are required at short to medium throws, thus, perfect for structures, bridge pylons, and buildings/facades. With the Q-10, it is possible to obtain a wide even-field coverage, while saving installation resources as less fixtures are needed for large-scale results.

Features and benefits

- ✓ Extremely powerful LED wash light with 57140 lumen RGBW
- ✓ Superior optical color mixing and no color shifts
- ✓ IP66-rated with a patented built-in dehumidifier for a maintenance free operation
- ✓ 100° wide-angle coverage
- ✓ Ideal application: Short to medium-throw
- ✓ Flicker-free operation with 100% smooth dimming performance
- ✓ 5-year warranty in corrosion class C5-M (marine)
- ✓ Rugged construction and compact size / lumen ratio

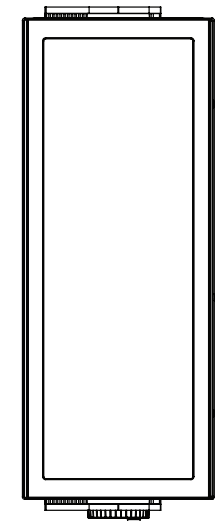
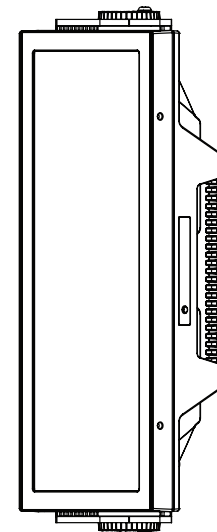
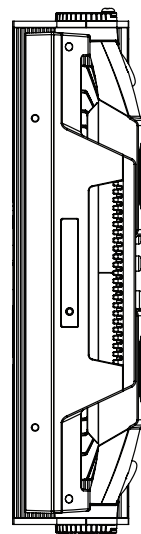
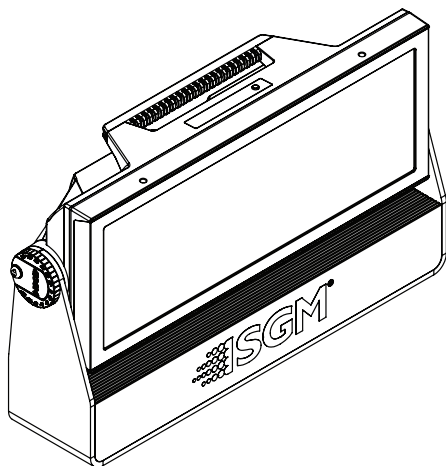
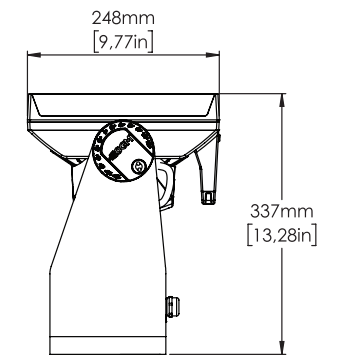
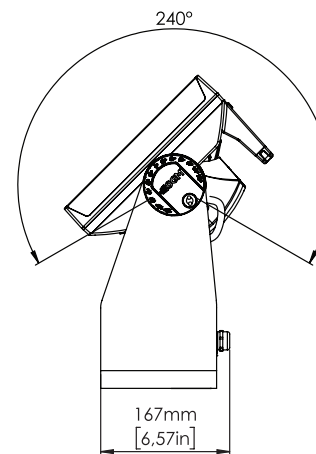
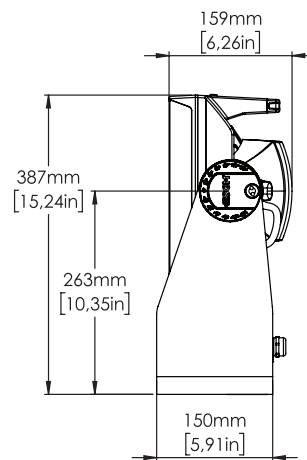
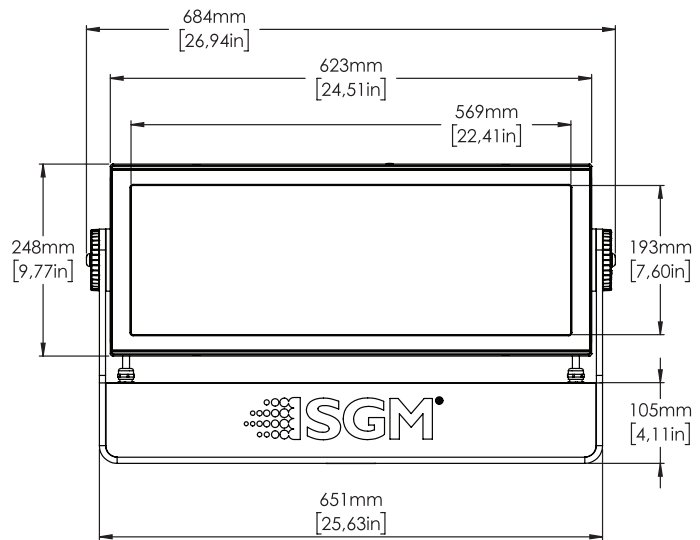
Certifications & classifications

IP66

RoHS

CE





Specification

Optical Data	LED expected lifetime	50,000 hours
	Lightsource	2,048 x RGB SMD LEDs & 2,048 x white SMD LEDs (5,700K)
	Native lens options	110°
	Optional filters	Extra medium angle soft diffusion, Q, internal Extra wide angle soft diffusion, Q, internal Elliptical horizontal effect, Q, internal Elliptical vertical effect, Q, internal
Photometric	Average CRI (CTC)	83
	Color temperature range	2000K - 10000K
	Efficacy	47.6 lm/W
	Light output all LEDs on	57140 lm
	Light output blue	3032 lm
	Light output green	15625 lm
	Light output red	5609 lm
	Lumen per kilogram	2886 lm / Kg
	Lux @ 10m	223 lux
	Lux @ 3m	2593 lux
	Lux @ 5m	934 lux
	Native beam angle(s)	104° (with 110° lens)
Physical	Color options	Black - RAL 9004 Custom color - Any RAL White - RAL 9010
	Corrosion class	CX (C5-M - ISO 12944)
	Effective Projected Area	3.7 Square ft
	IP class	IP66
	Material	Aluminium PC/ASA Plastic Rubber Steel Tempered Glass
	Net dimensions	702 x 402 x 206 mm
	Net dimensions inches	27.7 x 15.8 x 8.1 inches
	Net weight	19.8 kg (43.7 lbs)
Features	Color calibration	SGM proprietary, full color calibration

	Dehumidifier	Base / Head
	Dimming	3 Smooth fade in, DMX-controllable curves: gamma corrected, linear, halogen emulation
	Emulation mode / effect	Tungsten response emulation Color Filter Emulation
	Filters	Optional internal spread angle filters (factory assembled)
	LED panel	8 individually controllable segments
	Other	Studio DMX mode(s) LED frequency control over DMX
	Power / DMX indicator	Base
	Strobe	Ultra-high-speed strobe effects Intensity, Duration, Rate and FX control channels Pixel strobe feature (up to 8 segments)
	Tilt	0 - 190°
	Tilt locking system	POI Locking system with pignose bolts and angle indicator
Electrical	Electrical protection	Overload protection with automatic recover
	Input voltage, absolute max. rating	90 - 305 VAC; 50 / 60 Hz
	Input voltage, nominal	100 - 277 VAC; 50 / 60 Hz
	Max inrush current 230VAC	110 A
	Max power consumption	1250 W
	Power factor	0.99 PF (230 V)
	Power Supply Unit	Auto-ranging electronic switch-mode
	Standby power consumption	39 W
Programming and Control	16-bit control	Dimmer, Red, Green, Blue, White
	DMX channels	6, 8, 10, 27 or 30
	DMX modes	7
	Protocol	CRMx, W-DMX™ G2, W-DMX™ G3, W-DMX™ G4, W-DMX™ G4S USITT DMX512A Wireless RDM RDM ANSI E1.20
	Setting and addressing	RDM ANSI E1.20
	Wireless DMX	Lumen Radio with RDM
Connections	Data cable diameter	6,5 mm +/- 0,2 mm
	DMX data in/out	5 meter cable for DMX In and DMX Thru (permanently wired) Connection plate with terminals
	Power	Power cable 5 meter with bare ends (permanently wired)

	Power cable diameter	Connection plate with terminals 8,5 mm +/- 0,3 mm
Installation	Mounting point	3 x 2 M-10 locking points (suitable for two or three optional POI Omega brackets)
	Orientation	Any
	Rigging possibilities	Hanging / horizontal mounted
	Safety features	2 attachment points for safety wire Minimum distance to combustible materials: 0.3 meter (11 in).
Thermal	Cooling	Active, Forced Air, Temperature-regulated
	Humidity (max.)	98 %
	Temperature range, operating	-40°C to 50°C
	Temperature range, start-up	-20°C to 50°C
	Temperature range, storage	-40°C to 80°C
	Thermal protection	Automatic overtemperature protection
	Total heat dissipation, max power	4265 BTU per hour
	Total heat dissipation, standby	133.1 BTU per hour
Included items	Included items	POI Pignose-lock Key with magnet Safety instructions and installation quick guide 6 M-10 screws
Conforms To	CE - 2014/30/EU: EMC Directive	EN 55103-1 EN 55103-2 EN 55015 EN 61547 EN 61000-3-2 EN 61000-3-3
	CE - 2014/35/EU: Low Voltage Directive	EN 60598-1 EN 60598-2-17 EN 62471 EN 60529
	RoHS2 Directive	2011/65/EU
	UL	UL Std. 1573
Certified To	CSA	CSA-E598-2-17-98, Ed: 1 CSA E60598-1, Ed: 3

NOTES:

Due to continuous improvements and innovations, specifications may change without notice.

LEDs' expected lifetime provided by manufacturer and obtained under manufacturer's test conditions.

Zoom range defined as a minimum beam angle to a maximum field angle.

Photometric measurements obtained with Goniometer Scan / SGM Illumination Lab 1.6.0.0.

Lumen output in pixel products is calculated.

Ordering information

Qty	Product name	Item number
<input type="checkbox"/>	Q-10, POI, BL	80270403
<input type="checkbox"/>	Q-10, POI, WH	80270404
<input type="checkbox"/>	Q-10, POI, CU	80270405
<input type="checkbox"/>		
Accessories		Item number
<input type="checkbox"/>	Vacuum Test Kit	83061136
<input type="checkbox"/>	Spanner key / Magnet for POI	19080604
<input type="checkbox"/>	Mounting plate, 90° - Large, POI P/Q/i-series	83060622
<input type="checkbox"/>	Mounting plate, flat - Large, POI P/Q/i-series	83060618
<input type="checkbox"/>	RDM Addressing Tool	
<input type="checkbox"/>	Anti-glare shield, half - Large, POI, P/Q Series	83061163
<input type="checkbox"/>	Anti-glare shield, full - Large, POI, P/Q Series	83061167
<input type="checkbox"/>	Omega Bracket POI	83060623
<input type="checkbox"/>	SGM USB uploader cable, POI	83062067
<input type="checkbox"/>	Universal Bracket	83060641
<input type="checkbox"/>		



Headquarter [+45 70 20 74 00](tel:+4570207400)

Mail info@sgmlight.com

Website sgmlight.com