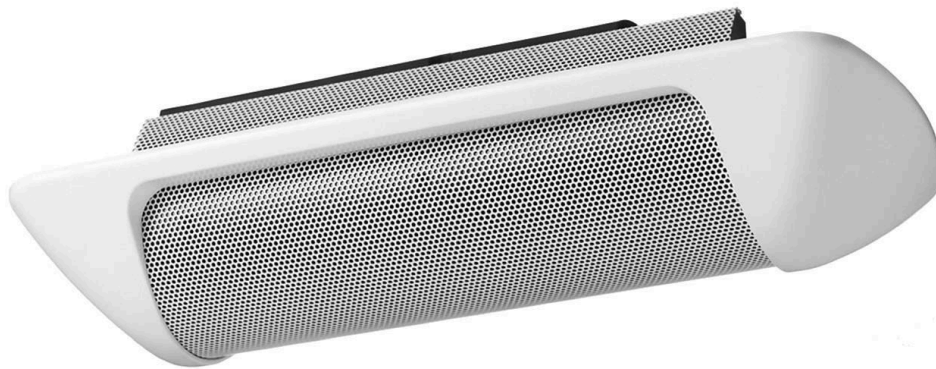


# H-1 EU

SPEAKER SYSTEM

The H-1 is a cylinder-shaped, small flush-mount 2-way speaker that ensures quality sound reproduction. The mounting angle for its enclosure can be adjusted for up to 90 degrees.

---



Article number: H-1 EU  
Alternative products: H-1, H-2, H-2 EU,  
H-2WP

---

## Specifications

Dimensions (W x H x D)	312 x 126 x 90 mm
Dimensions (ø x D)	x 90 mm
Finish	ABS resin, paint, signal white (RAL 9003 or equivalent),

# H-1 EU

SPEAKER SYSTEM

Appearance

