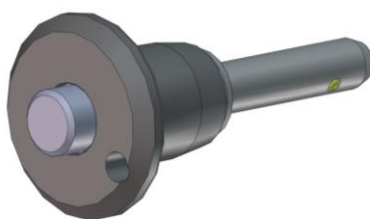


### Ball Lock Pins 5x15

#### Self-Locking with button handle



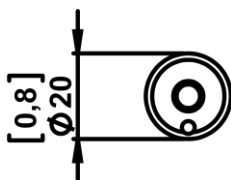
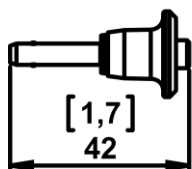
**Press button to release pin.**

**Stainless steel 1.4305**

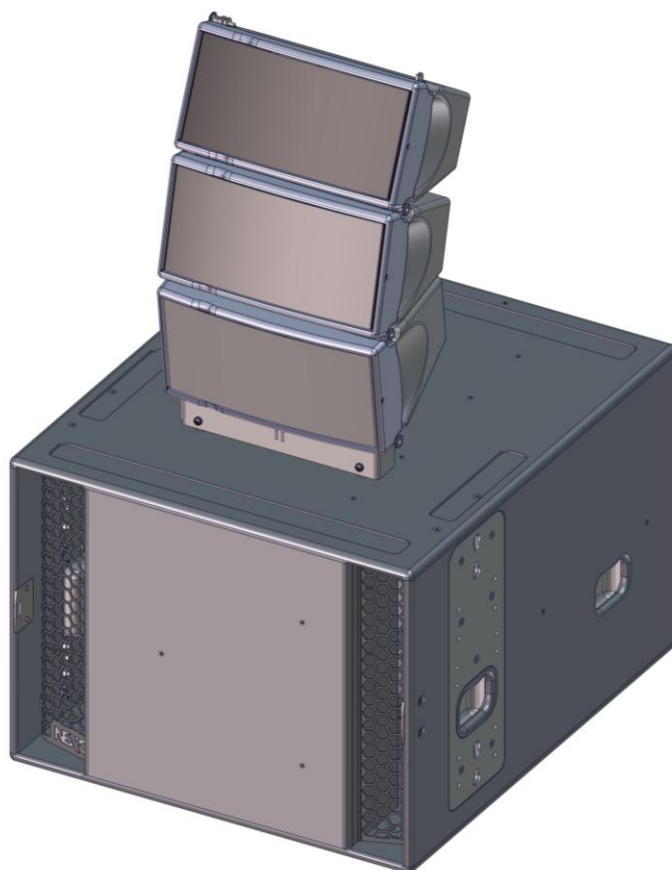
**Temperature range from -30°C up to +150°C**

**Weight: 12.5 g**

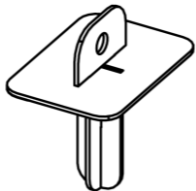


**Dimensions:**



### Sub Adapter GeoM6

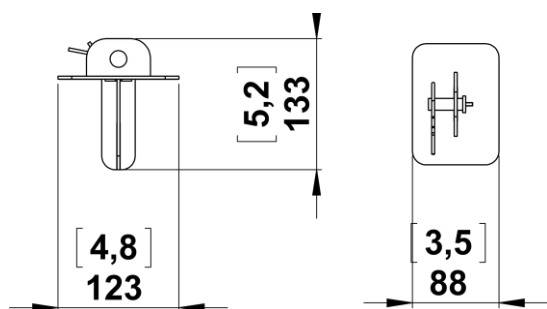


#### **Contents:**

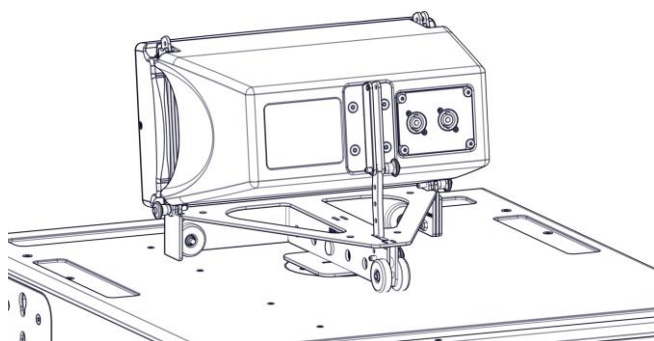
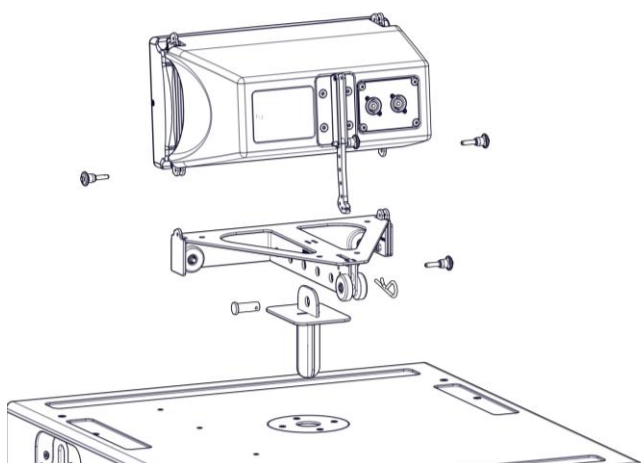
X1	X1	X1
		

**Weight: 0.6 Kg**

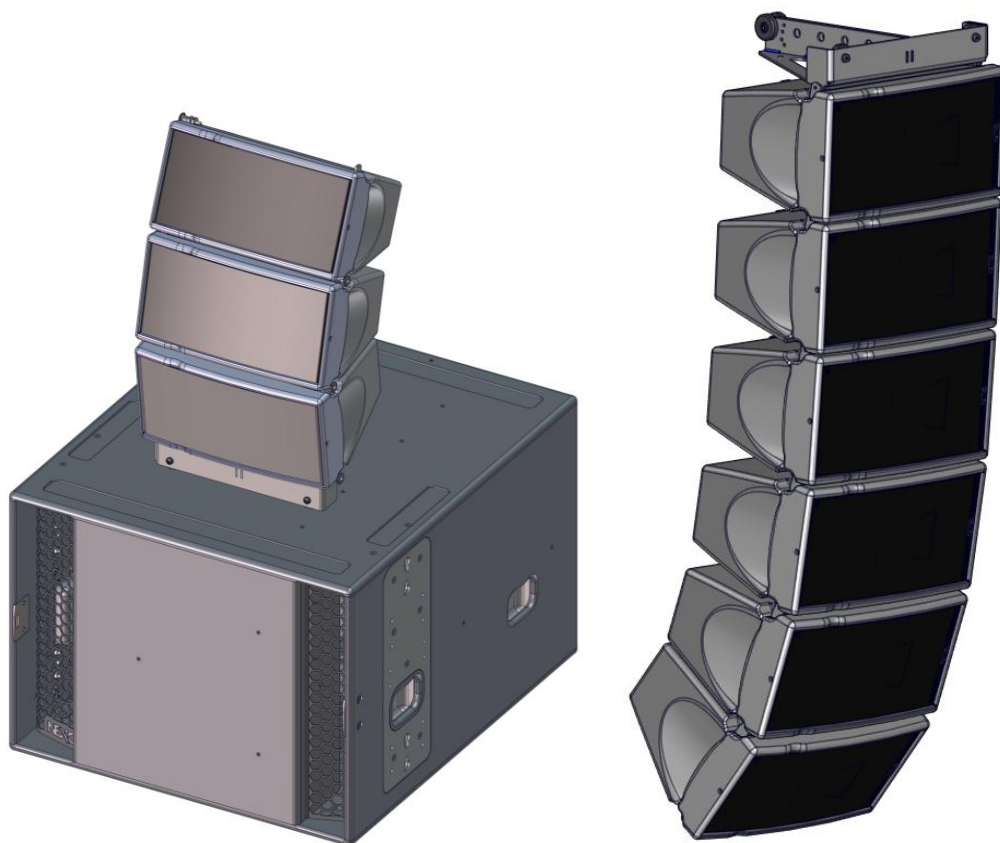
## Dimensions:



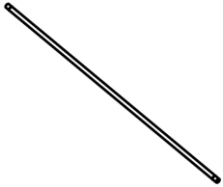



## Used with GMT-BUMPER



### Rigging Fix GeoM6



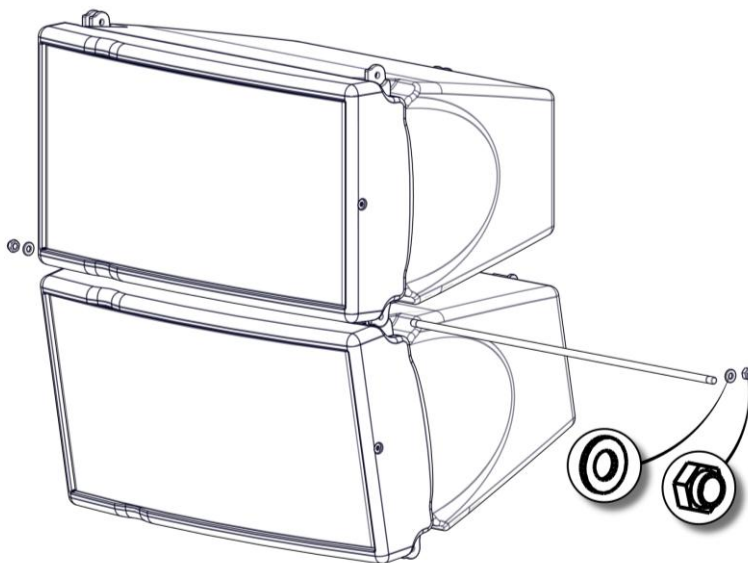
#### Contents:

X1	X2	X2	X4
			

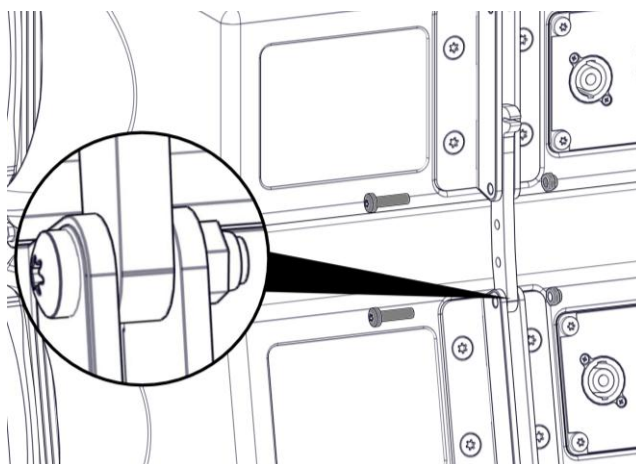
**Weight: 0.2 Kg**

## USED WITH GMT-BUMPER / GMT-LBUMP

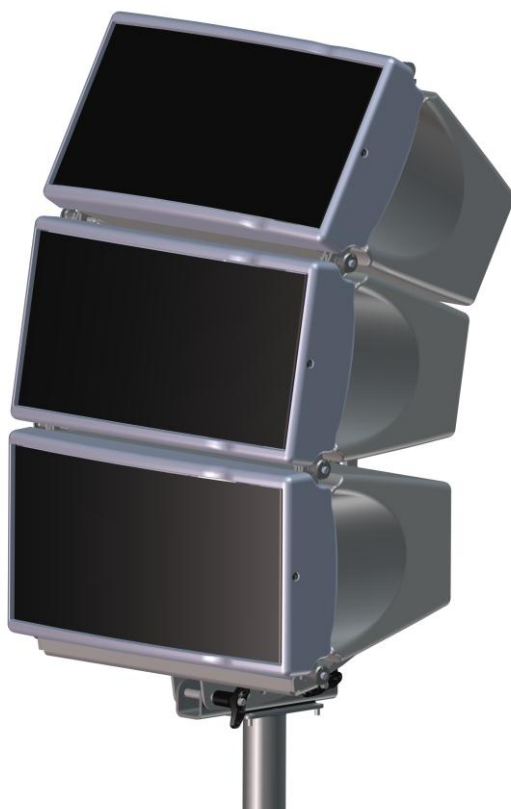
### Front Assembly



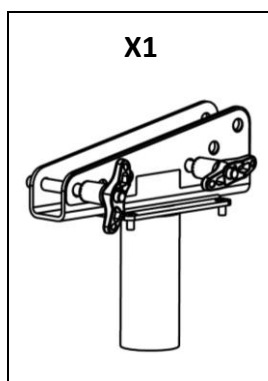
### Rear Assembly



### Pole Mount Adapter GeoM6

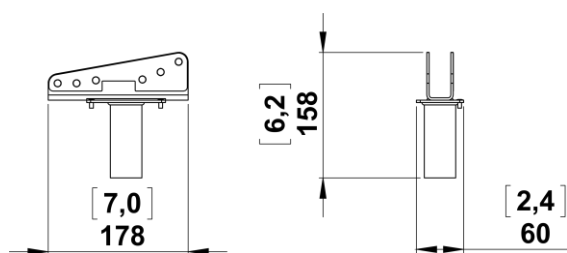


#### Contents:

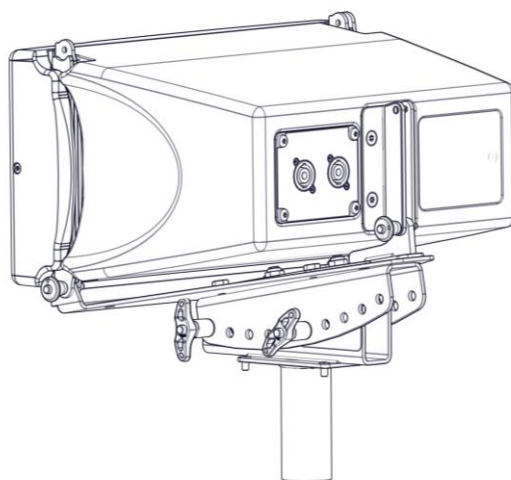
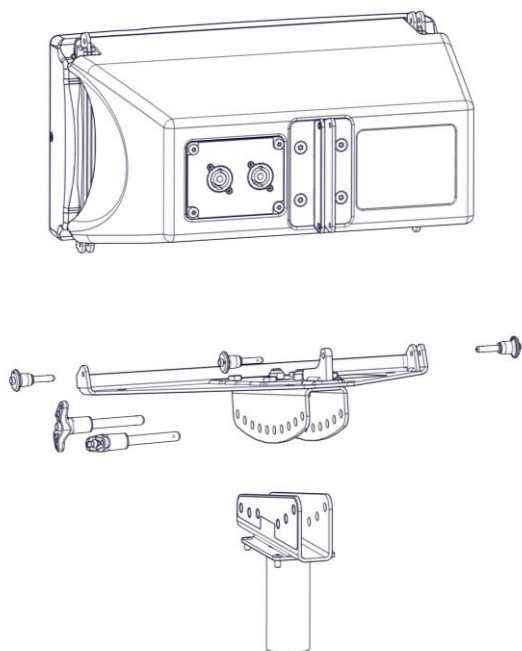


Weight: 0.9 Kg

## Dimensions:



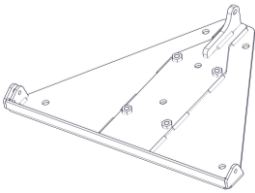

## Used with GMT-LBUMP – GMT-LBAPDT



### Light Bumper GeoM6



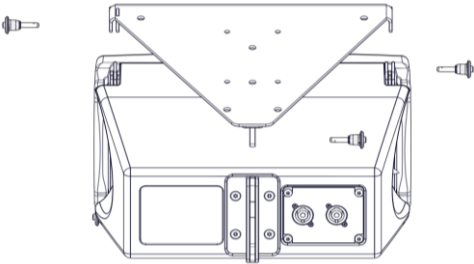
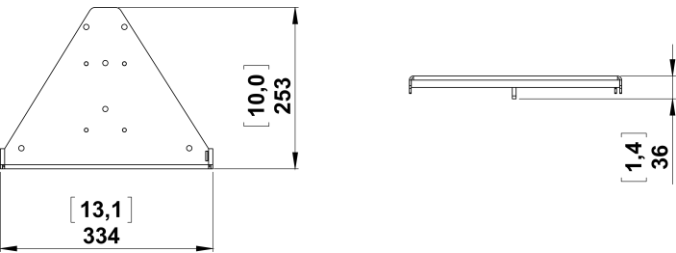
#### **Contents:**

X1	X4 Torx 6x20
	

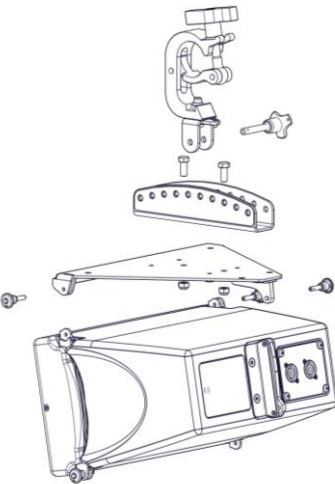
**Weight: 2.7 Kg**



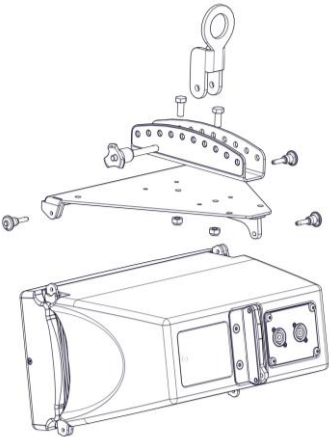
Dimensions:



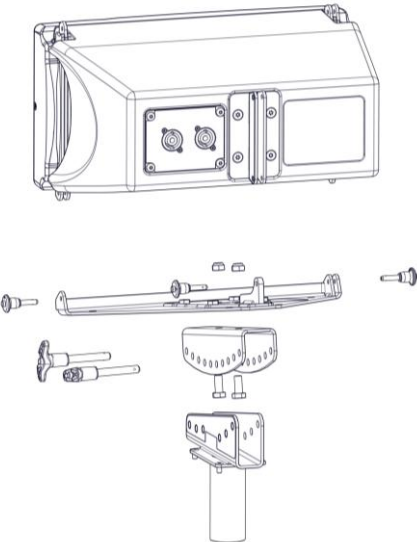
- GMT-LBADPT / VNT-TCBRK



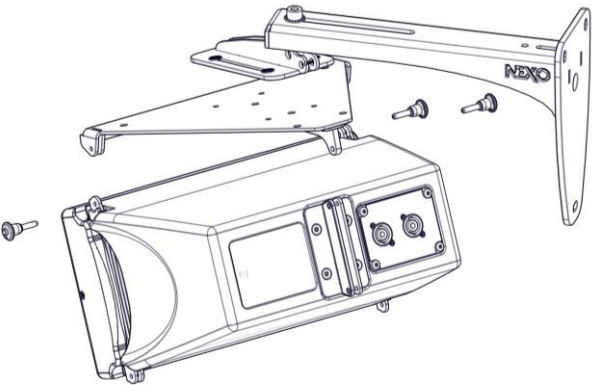
- GMT-LBADPT / VNT-XHBRK



- GMT-LBADPT / VNT-POLE

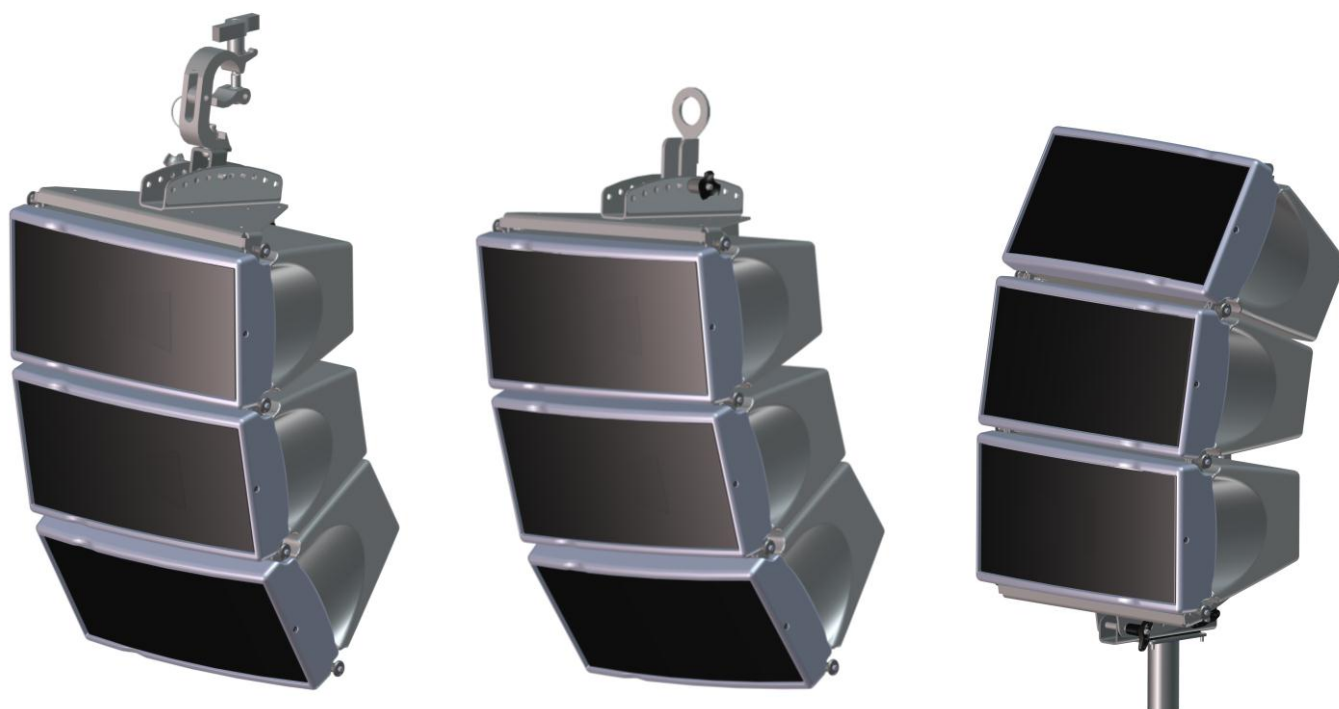


- VNI-WS15

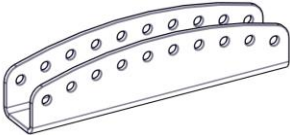





Use only the provided screws (6x20). Risk of damage the cabinet with too long screw.  
Apply Loctite243 on the screw before.

### Light Bumper Adapter GeoM6

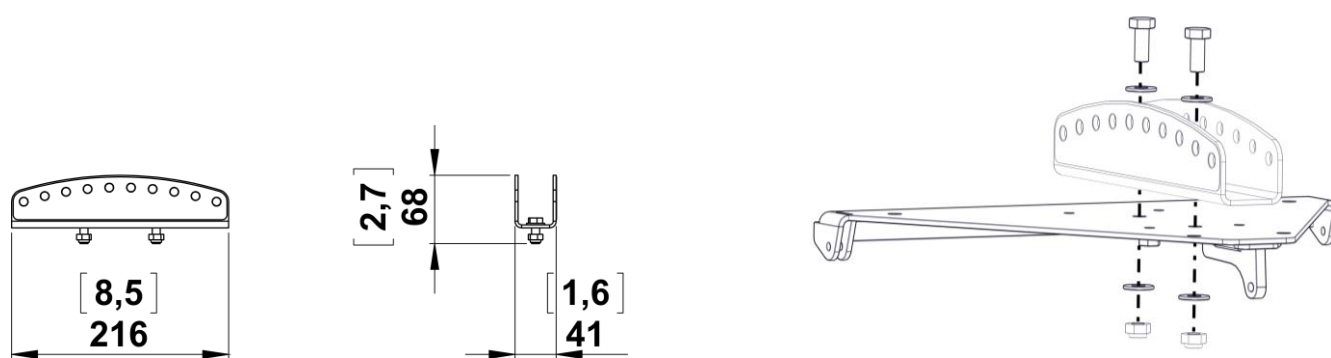


#### Contents:

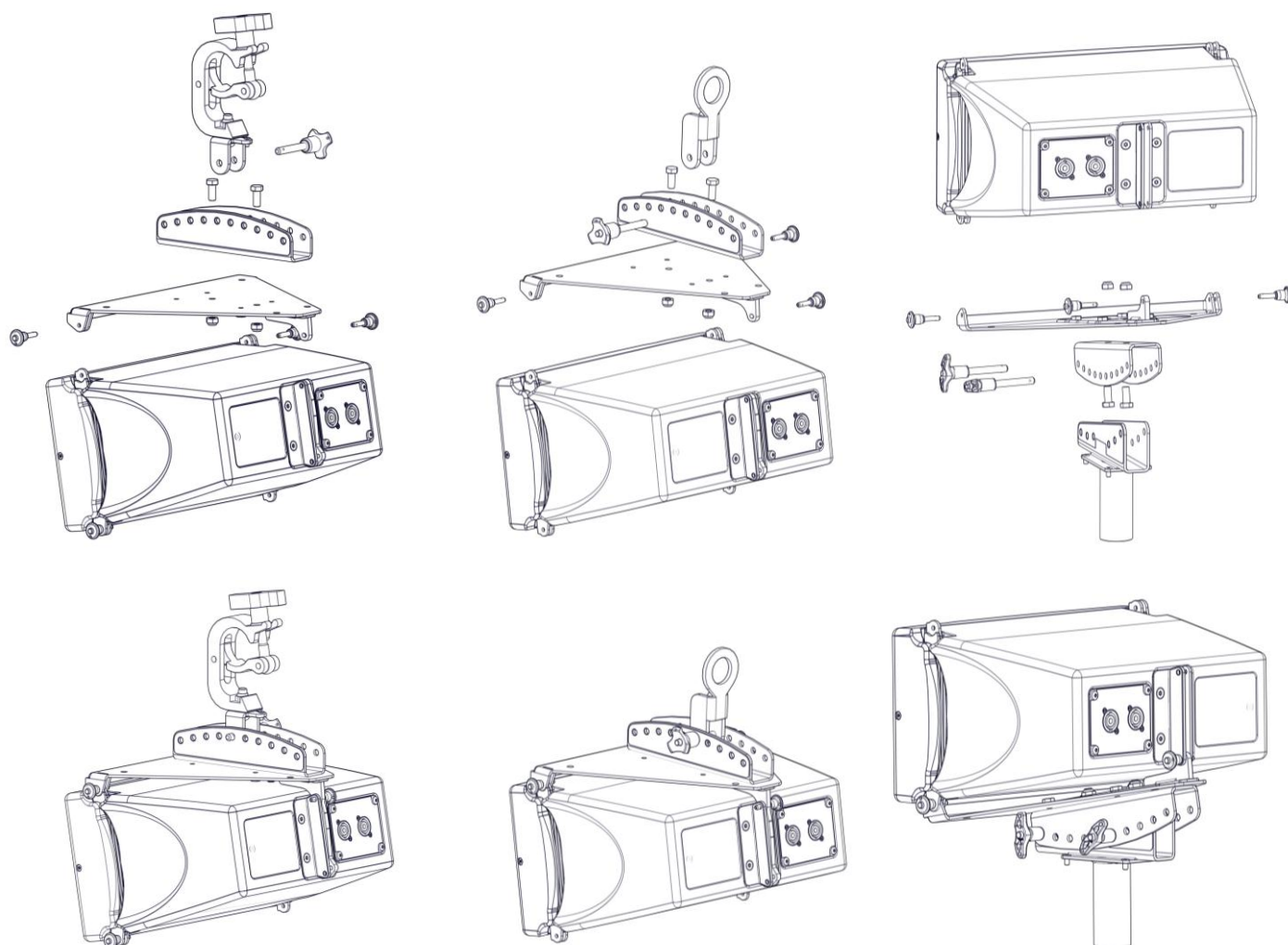
X1	X2	X2	X4
			

**Weight: 1.6 Kg**

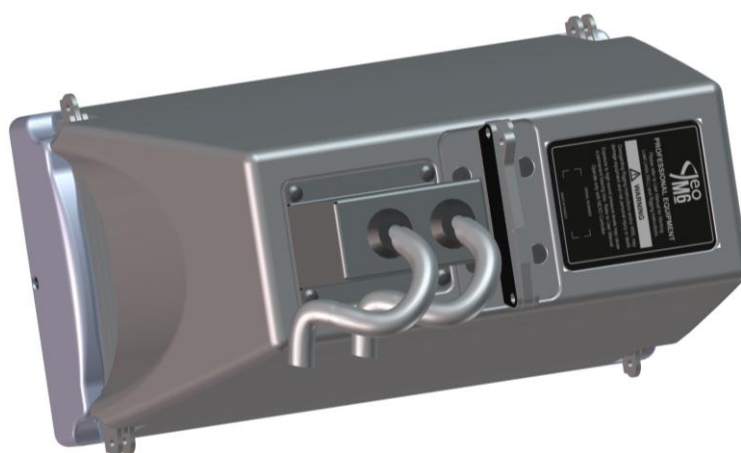
## Dimensions:



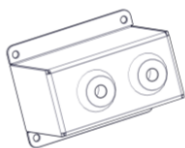

**USED WITH GMT-LBUMP + VNT-TCBRK / VNT-XHBRK / VNT-POLE**



### IPCOV GeoM6

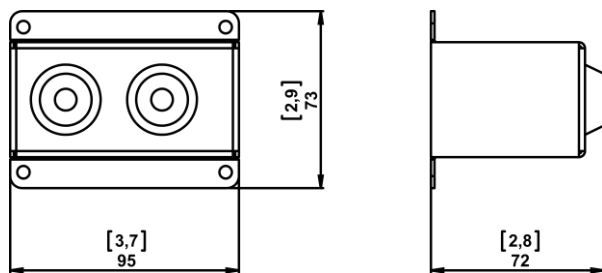


#### Contents:

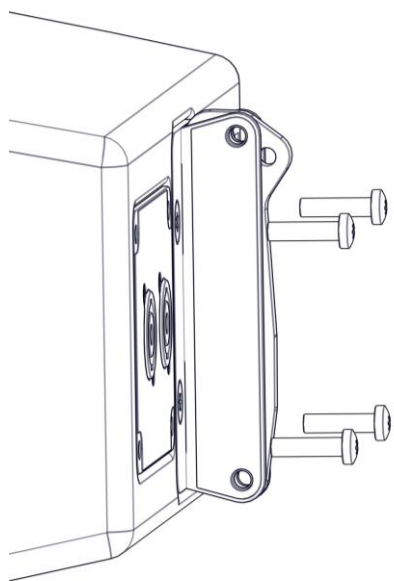
X1	X4
	

Weight: 0.3 Kg

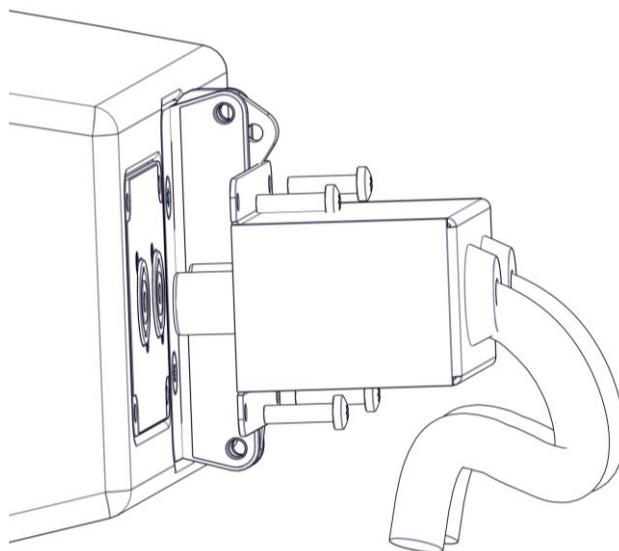
## Dimensions:



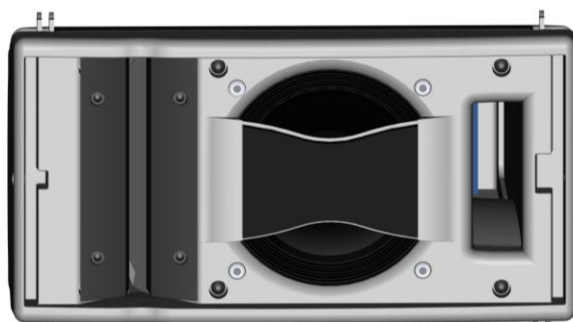
### Remove the 4 screws (T25)



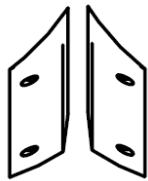

### Positioning the Connector – Pass the cable in the plastic Ring – Fix with the 4 new screws.



## Flange 120° GeoM620

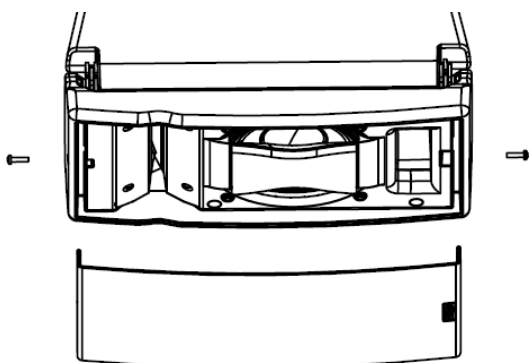


### Contents:

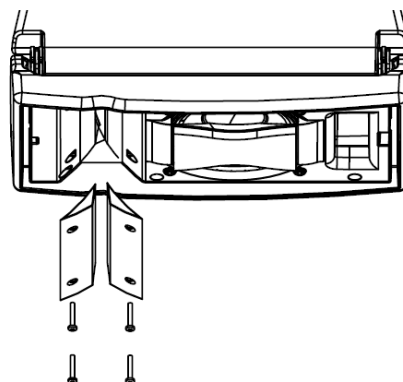
X1	X4
	

**Weight: 0.2 Kg**

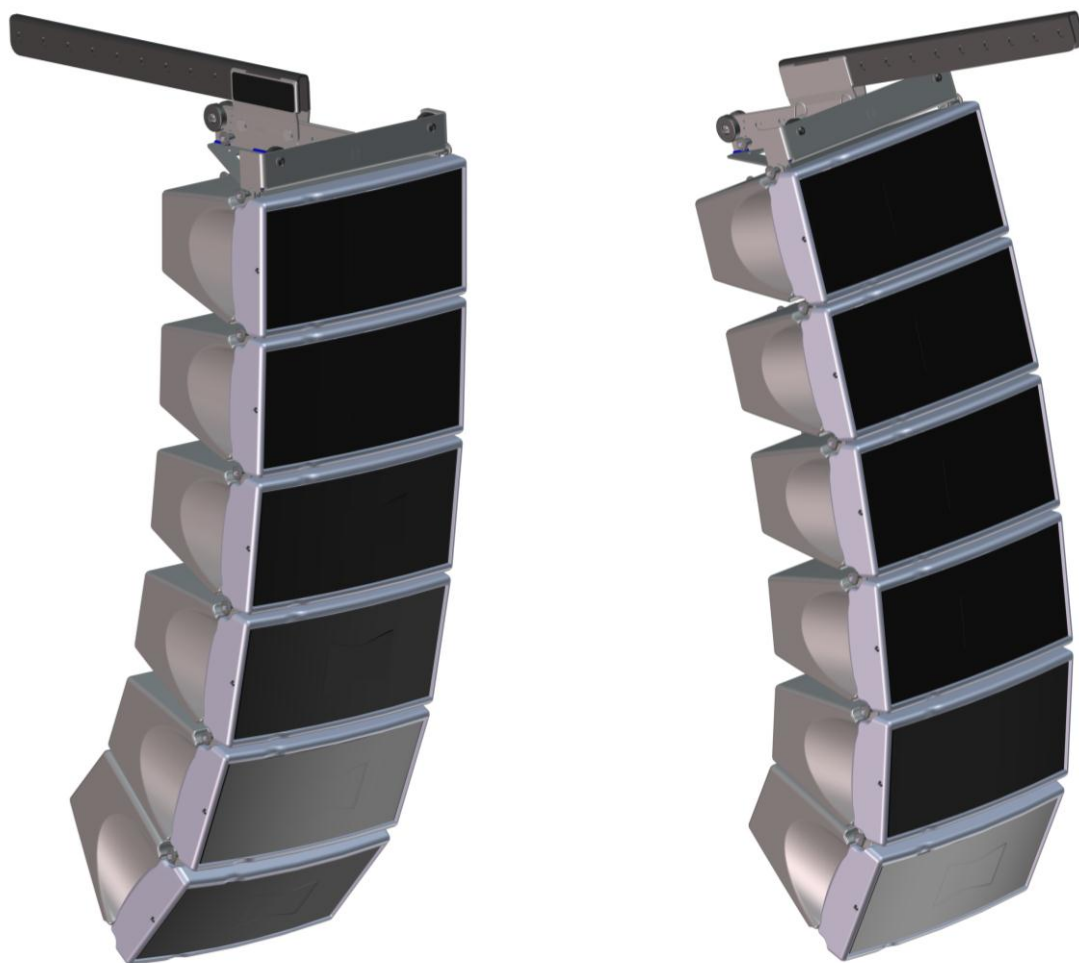
**Remove the grid (T15)**



**Remove 4 screw - Positioning the flange -  
Reassembly the grid**



### Extension Bar for GeoM6

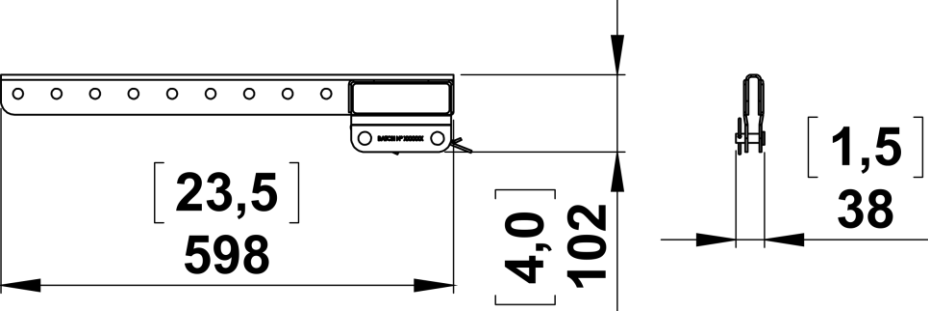


#### Contents:

X1	X2	X2

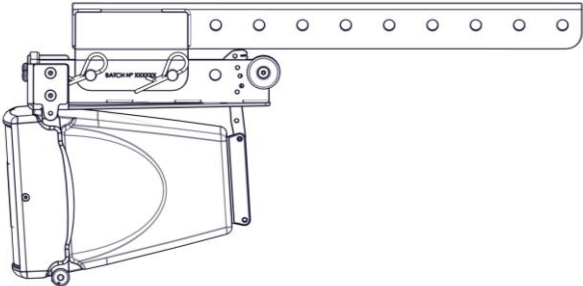
Weight: 1.9 Kg

Dimensions:

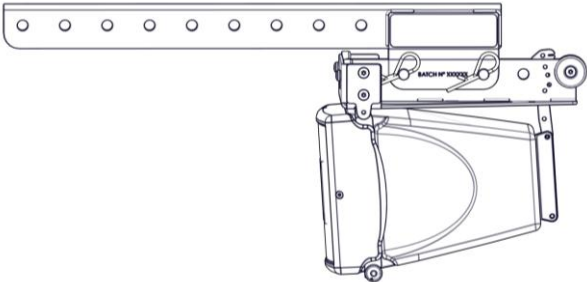


**Warning:** Positioning only with “B” – “D” on GMT-BUMPER

Down Tilt

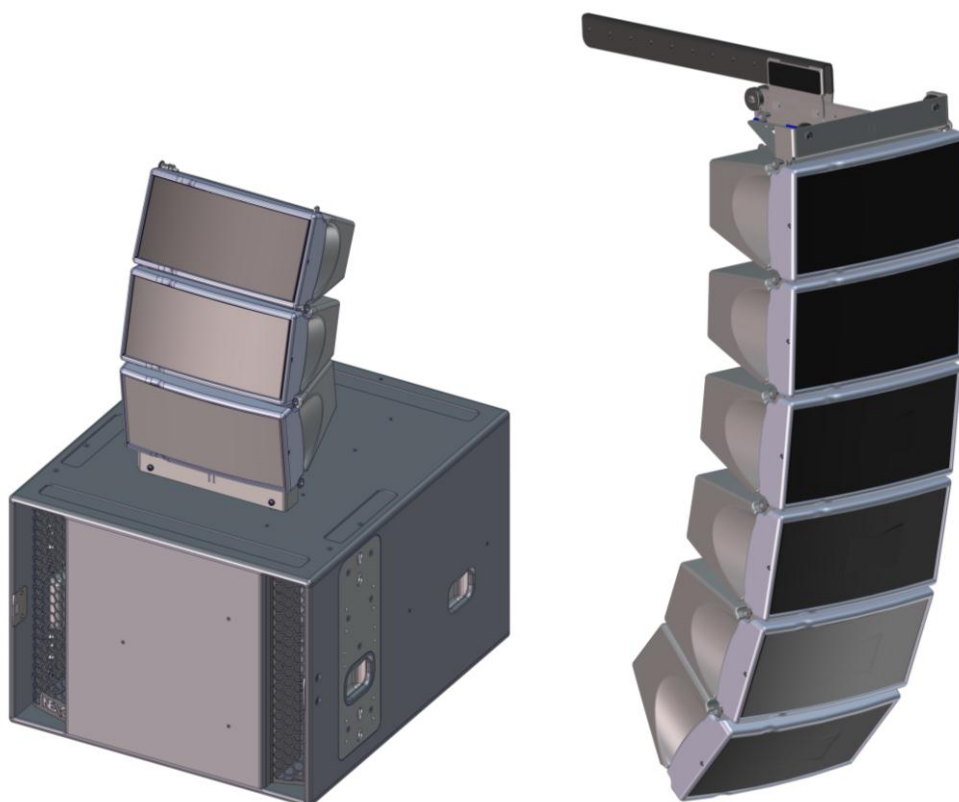


Up Tilt

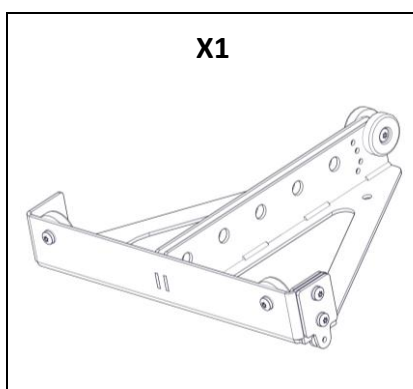




### Bumper GeoM6

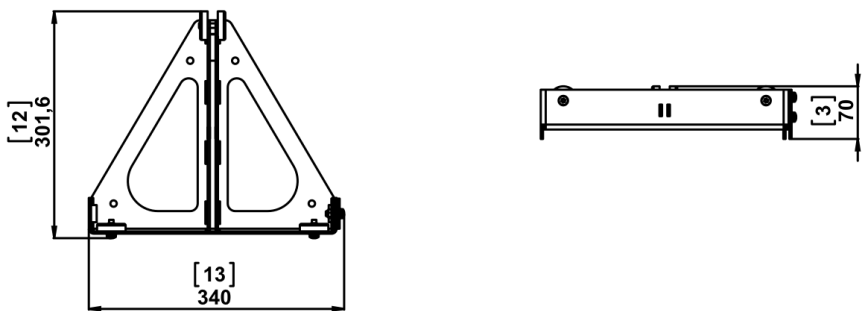


### Contents:



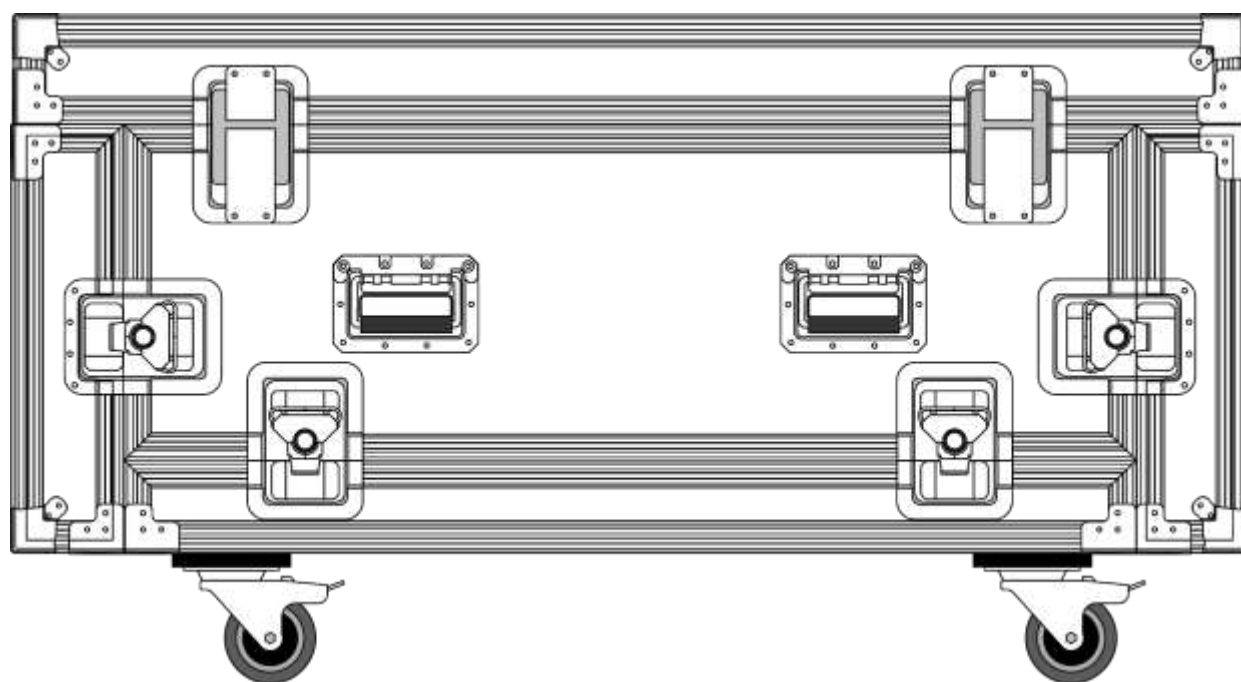
**Weight: 3.5 Kg**

Dimensions:



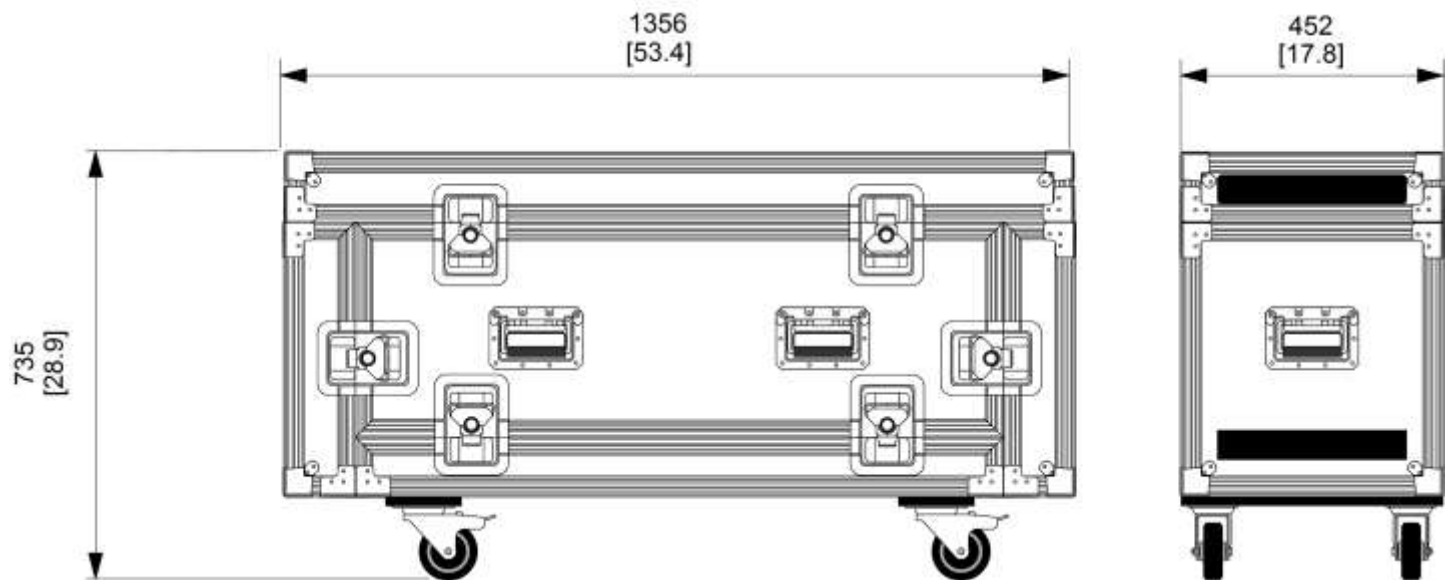
Used Stacked	Used Flowned
<p>Exploded view diagram showing the assembly of the 'Used Stacked' configuration. It includes a rectangular unit, a triangular bracket, and a base plate, with various screws and bolts indicated for assembly.</p>	<p>Exploded view diagram showing the assembly of the 'Used Flowned' configuration. It includes a long bar with rollers, a rectangular unit, and a base plate, with various screws and bolts indicated for assembly.</p>
<p>Isometric view diagram showing the assembled 'Used Stacked' configuration. The rectangular unit is mounted on the triangular bracket, which is attached to the base plate.</p>	<p>Isometric view diagram showing the assembled 'Used Flowned' configuration. The long bar with rollers is mounted on the rectangular unit, which is attached to the base plate.</p>

### Flight case 6x GeoM6-Bumper

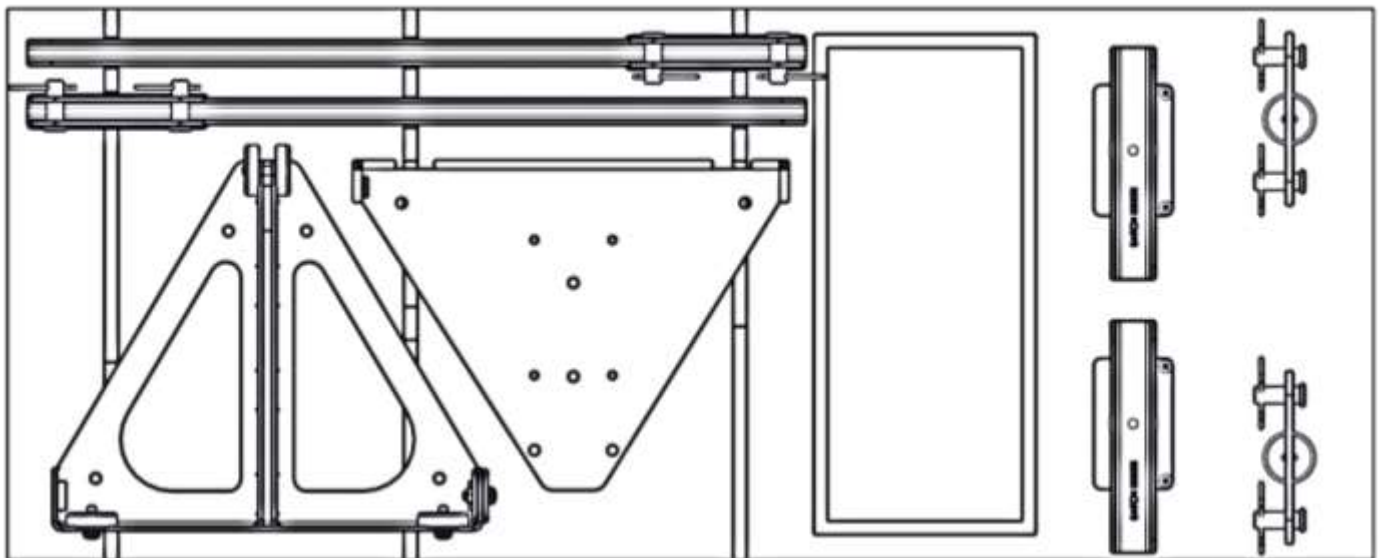


**Weight: 57 kg / 125.7 lb**

## Dimensions:



## Rigging Location:



- 2 spaces for EXBAR.
- 2 spaces for LBUMP/BUMPER.
- 2 spaces for VNT-POLE.
- 2 spaces for BPADPT-2.
- Space for other accessories (TCBRK – BL515 – LBPADPT – ... ).

