

## N-8010EX CU

### IP INTERCOM EXCHANGE



The IP Intercom Exchange uses packet audio technology to permit connection of up to sixteen N-8000 Series stations. Hands-free conversation is possible between stations. Moreover, the exchange is equipped with a networking interface, allowing up to 192 exchanges to be connected over a network using additional IP intercom exchanges. The Exchange can be mounted in an EIA standard rack (1-unit size) or to a wall using the supplied bracket.

### Key features

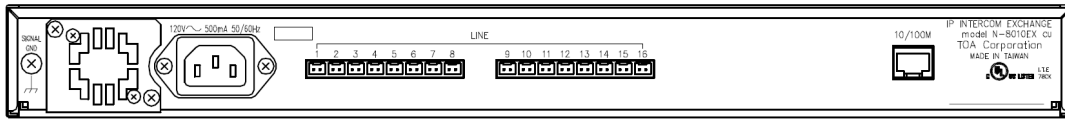
- 10 Base-T / 100 Base-TX Ethernet network connection
- 16 station capacity
- 2-wire connection between stations and exchange
- 1 internal / 2 external speech links

## Specifications

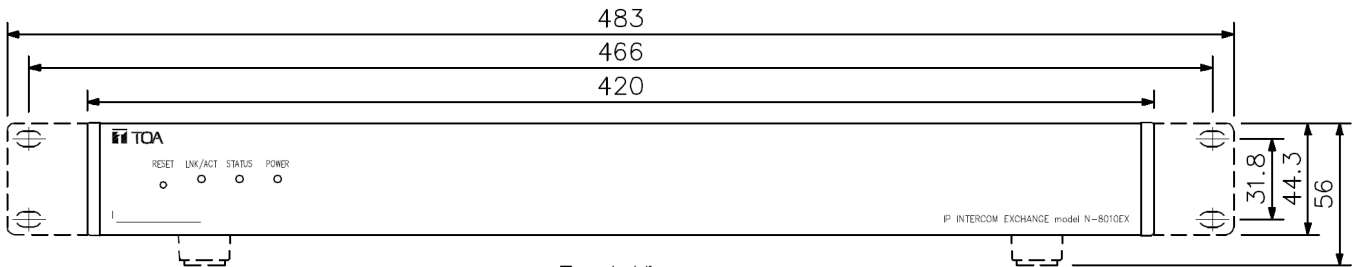
\* 0 dB = 1 V

Power Source	120 V AC, 50/60 Hz
Power Consumption	50 W (at rated), 75 W (max.)
Paging Output	Station paging only
Interface Section for Station	<p>Number of lines: 16 lines</p> <p>Number of speech link: Internal: 1/External: 2</p> <p>Type of Speech Path: Space sharing/Time Space sharing</p> <p>Transmission system: 2 wire 160 kbps echo canceller transmission system</p> <p>Signal Level: 0 dB* or less</p> <p>Transmission range: Max. 1500 m (#0.65 mm, Loop resistance 170 Ω)</p> <p>Speech method: Simultaneous conversation by way of echo canceller (Hands-free),</p> <p>Connector: Dedicated connector</p> <p>Wiring method: 1 set of twisted pair cable</p> <p>Feeding voltage/current: 48 V DC, Max. 70 mA</p>
Network Section	<p>Network I/F: 10BASE-T/100BASE-TX (Automatic-Negotiation)</p> <p>Network protocol: TCP/IP, UDP, HTTP, RTP, ARP, ICMP, IGMP</p> <p>Audio packet transmission system: Unicast, Multicast</p> <p>Number of paging destinations: Unicast (max. 16), Multicast (max. 191)</p> <p>Connector: RJ45 connector</p> <p>Voice sampling frequency: 16 kHz, 8 kHz (controllable on the software)</p> <p>Quantifying bit number: 16-bit</p> <p>Voice encoding method: Sub-band ADPCM, Cryptosystem</p> <p>Voice packet loss recovery: Silence insertion</p> <p>Audio delay time: 80 ms, 320 ms (controllable on the software)</p>
Indicator	Network LNK/ACT indication, Status lamp, Power-on indication lamp
Other	Firmware update function, System registration data entry hold facility, Time of day hold facility, Forced air cooling, Reset switch (front panel)
Installation Method	Rack, Desk, Surface mount
Operating Temperature	0 °C to +40 °C (32 °F to 104 °F)
Operating Humidity	90 %RH or less (no condensation)
Finish	Pre-coated steel plate, black, 30 % gloss
Dimensions	420 (W) x 44.3 (H) x 356 (D) mm (16.54" x 1.74" x 14.02")
Weight	4.2 kg
Included Accessories	<p>AC power cord (2 m) ...1, CD (for PC setting, maintenance use) ...1,</p> <p>Mini-clamp plug (2 pins) ...20, Plastic foot ...4, Screw for fitting plastic foot ...4,</p> <p>Rack mounting bracket ...2, Screw for rack mounting ...4,</p> <p>Wall mounting bracket ...2, Screw for mounting bracket ...8,</p> <p>Screw for wall mounting ...4</p>

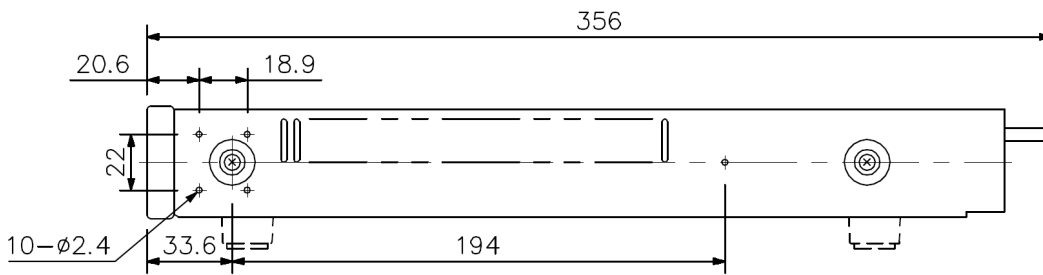
# Dimensions



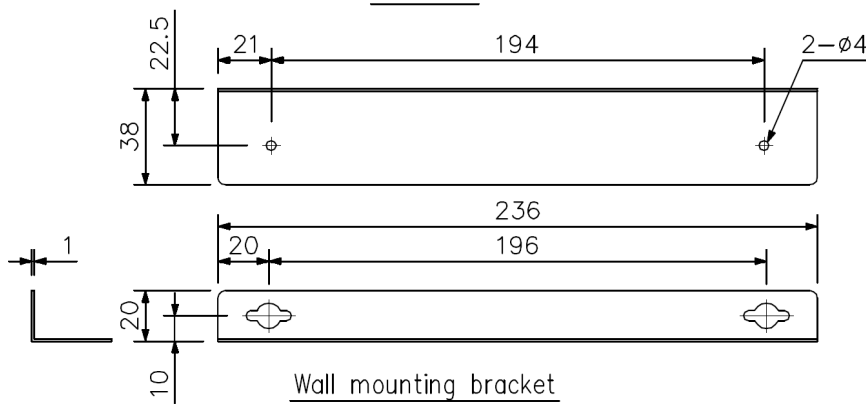
Rear View



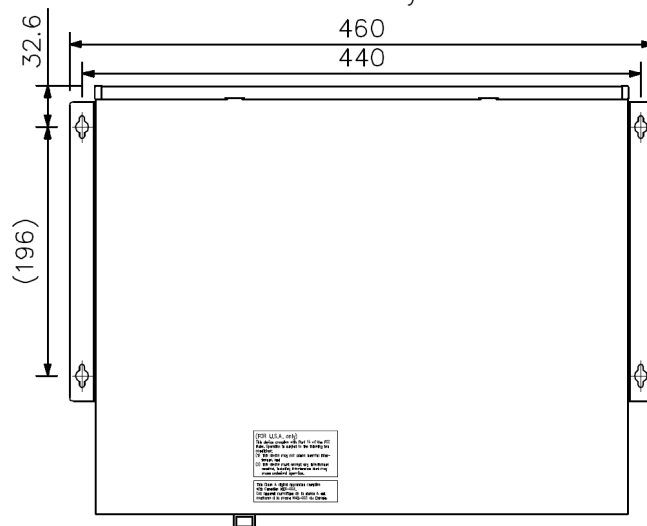
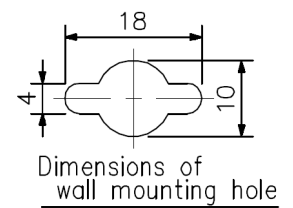
Front View



Side View



Wall mounting bracket  
(accessory)



Wall mounting installation

## A&E specifications

Fully digital IP mediation unit with connections for 16 stations. Connection to other teaching units, universal interface and IP intercom stations on a network. Connecting the stations in 2-wire technique. No separate power supply of needed receivers. 1 internal and 2 external communication channels are also available.

Programmable functions:

Call, announcements, speed dial, manual call forwarding, automatic call forwarding, time-based call routing, adjustable time limitation for discussions, announcements and ringtone, automatic activation of control outputs (E.g. call door intercom - CCTV via contact output activation), automatic call activation control input, group call, call forwarding to "Busy", Office - call forward unconditional (time adjustable), auto answer, classic answer, automatic direct dial at the receiver, priority call, choosing from up to 8 sources of background music, adjustable microphone sensitivity, ringer volume, speaker volume.

Additional grouping with customizable access rights regarding call and announcement permissions of the groups themselves.

3 Status LED indicators for: operation, status, network.

Including system software for Windows®2000 / Windows®XP.