

N-8000EX CU

IP INTERCOM EXCHANGE



The IP Intercom Exchange uses packet audio technology to permit connection of up to sixteen N-8000 Series stations, and features two outputs for public address paging. Hands-free conversation is possible between stations. Moreover, the exchange is equipped with a networking interface, allowing up to 192 exchanges to be connected over a network using additional IP intercom exchanges. The Exchange can be mounted in an EIA standard rack (1-unit size) or to a wall using the supplied bracket.

Key features

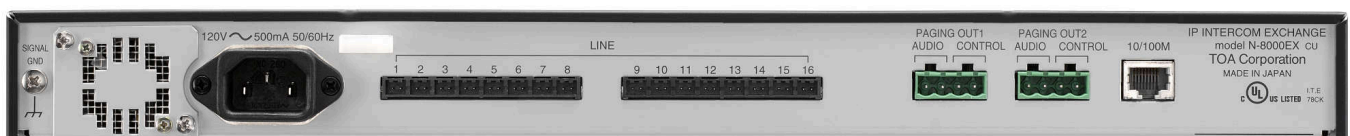
- 10 Base-T / 100 Base-TX Ethernet network connection
- 16 station capacity
- Stations connect to exchange via twisted pair cable
- 4 internal / 8 external speech links
- 2 audio paging outputs, 2 relay outputs

Specifications

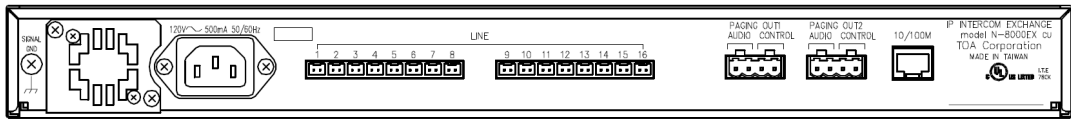
* 0 dB = 1 V

Power Source	120 V AC, 50/60 Hz
Power Consumption	50 W (at rated), 75 W (max.)
Paging Output	Audio: 2 channels Max. 0 dB*, 600 Ω, balanced Control: 2 channels, relay contact output, contact capacity: 24 V DC/0.5 A Connector: Removable terminal block
Interface Section for Station	Number of lines: 16 lines Number of speech link: Internal: 4/External: 8 Type of Speech Path: Space sharing/Time Space sharing Transmission system: 2 wire 160 kbps echo canceller transmission system Signal Level: 0 dB* or less Transmission range: Max. 1500 m (#0.65 mm, Loop resistance 170 Ω) Speech method: Simultaneous conversation by way of echo canceller (Hands-free), Connector: Dedicated connector Wiring method: 1 set of twisted pair cable Feeding voltage/current: 48 V DC, Max. 70 mA
Network Section	Network I/F: 10BASE-T/100BASE-TX (Automatic-Negotiation) Network protocol: TCP/IP, UDP, HTTP, RTP, ARP, ICMP, IGMP Audio packet transmission system: Unicast, Multicast Number of paging destinations: Unicast (max. 16), Multicast (max. 191) Connector: RJ45 connector Voice sampling frequency: 16 kHz, 8 kHz (controllable on the software) Quantifying bit number: 16-bit Voice encoding method: Sub-band ADPCM, Cryptosystem Voice packet loss recovery: Silence insertion Audio delay time: 80 ms, 320 ms (controllable on the software)
Indicator	Network LNK/ACT indication, Status lamp, Power-on indication lamp
Other	Firmware update function, System data hold function, Reset switch (front panel) Forced air cooling, Time of day hold facility
Installation Method	Rack, Desk, Surface mount
Operating Temperature	0 °C to +40 °C (32 °F to 104 °F)
Operating Humidity	90 %RH or less (no condensation)
Finish	Pre-coated steel plate, black, 30 % gloss
Dimensions	420 (W) x 44.3 (H) x 356 (D) mm (16.54" x 1.74" x 14.02")
Weight	4.1 kg
Included Accessories	AC power cord (2 m) ...1, CD (for PC setting, maintenance use) ...1, Removable terminal plug (4 pins)...2, Mini-clamp plug (2 pins) ...20, Plastic foot ...4, Screw for fitting plastic foot ...4, Rack mounting bracket ...2, Screw for rack mounting ...4, Wall mounting bracket ...2, Screw for mounting bracket ...8, Screw for wall mounting ...4

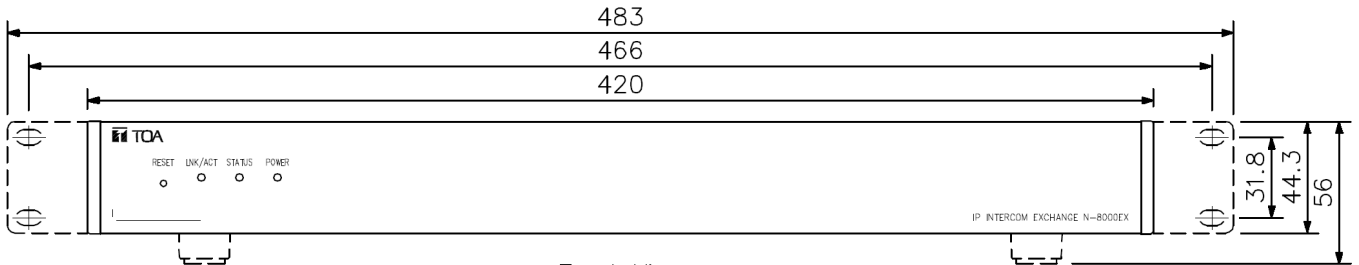
Product rear image



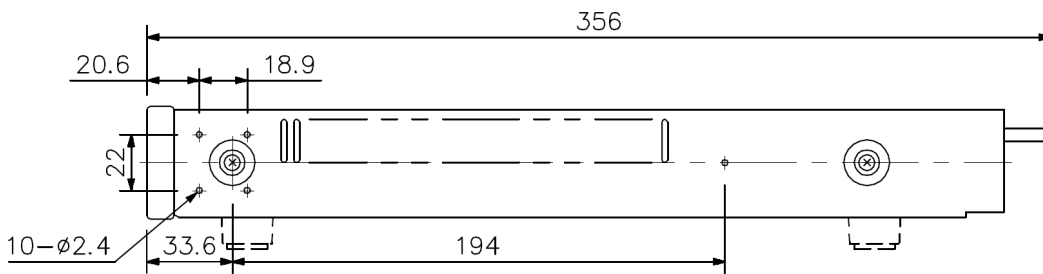
Dimensions



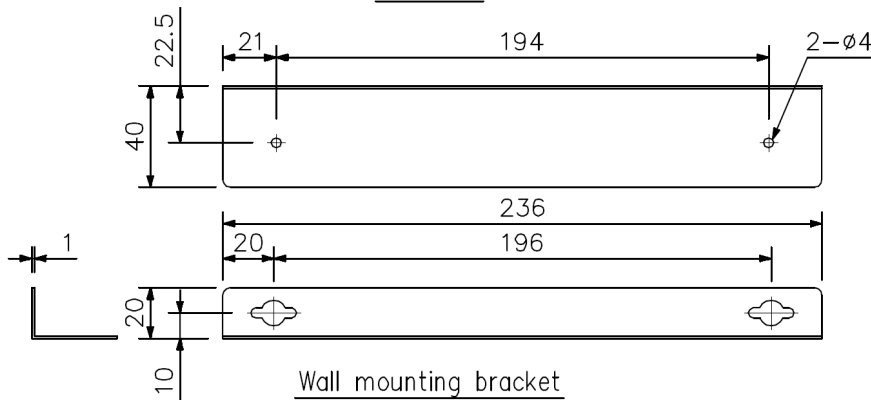
Rear View



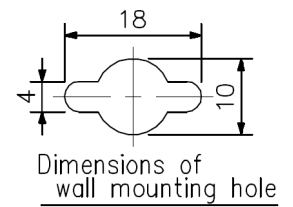
Front View



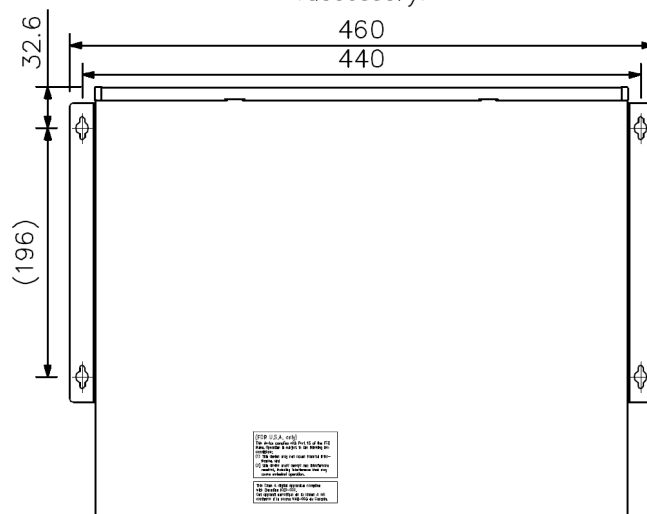
Side View



Wall mounting bracket (accessory)



Dimensions of wall mounting hole



Wall mounting installation

A&E specifications

Fully digital IP mediation unit with connections for 16 stations. 2 Audio outputs control output for announcements / control external audio equipment. Connection to other teaching units, universal interface and IP intercom stations on a network.

Connecting the stations in 2-wire technique. No separate power supply of needed receivers. 4 internal and 8 external communication channels are also available.

Programmable functions:

Call, announcements, speed dial, manual call forwarding, automatic call forwarding, time-based call routing, adjustable time limitation for discussions, announcements and ringtone, automatic activation of control outputs (E.g. call door intercom - activation CCTV via control output), automatic call activation control input, group call, call forwarding in "Occupied", Office - call forward unconditional (time adjustable), auto answer, classic answer, automatic direct dial at the receiver, priority call, choice of call priority, and message priority, choosing from up to 8 background music sources, adjustable microphone sensitivity and ringer volume speaker volume.

Additional grouping with customizable access rights regarding call and announcement permissions of the groups themselves.

3 Status LED indicators for: operation, status and network.

Including system software for Windows®2000 / Windows®XP.