



S 10

BASS REFLEX SUBWOOFER



Description

S 10 is a high power, compact subwoofer system ideal for those installations where the physically small size and impact of a 10" driver are desired. Extending the frequency response of these systems to below 50Hz this highly efficient design is capable of providing output levels normally associated with considerably larger enclosures. A system suited to background music playback in applications ranging from clubs, bars and cafes, right through to theatres and AV presentations. The low-frequency transducer is a 10" woofer with a 2,5" voice coil. Woofer design is the result of the latest refinements in RCF experiences in compact active and passive subwoofer design, resulting in a fast and controlled reproduction of the bass frequency range. A single unit can be suspended using the M10 inserts located on the top panel or those on the rear panel.

Features

- › 400 W RMS power handling
- › 124 dB max SPL
- › 50 ÷ 200 Hz frequency range
- › 1 x 10" high power woofer
- › High quality plywood cabinet
- › Steel front grille with clothing
- › M20 standard pole mount in top section of cabinet
- › 4 pole EUROBLOCK connector (audio input and parallel link output)
- › Single unit suspendable

Part Number

13000617 S 10

Black

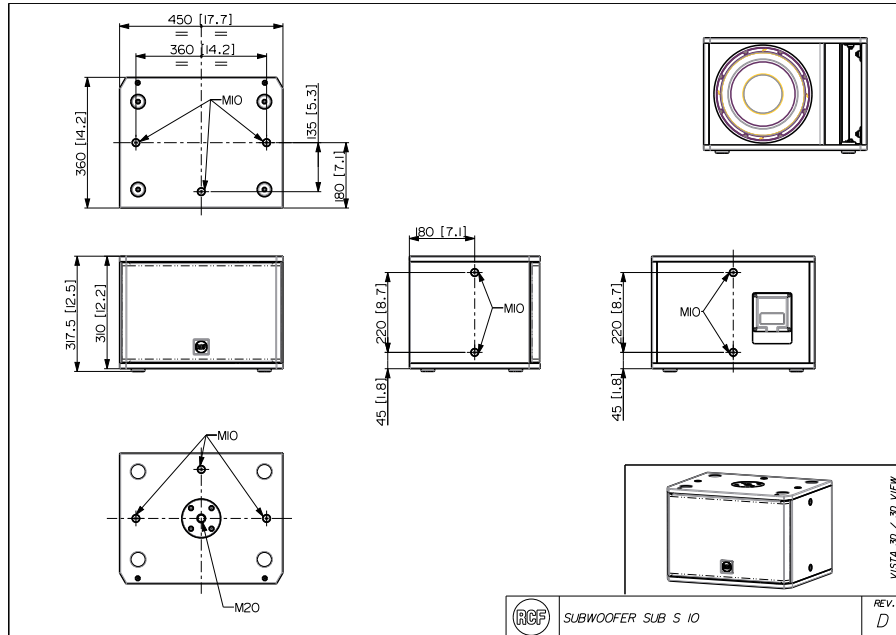
EAN 8024530018337



S 10

BASS REFLEX SUBWOOFER

Line Art 2D



TECHNICAL SPECIFICATIONS

Acoustical specifications	Frequency Response (-10dB)	45 Hz - 200 Hz
	Max SPL @ 1m	124 dB
	System Sensitivity	92 dB
Power section	Amplification	Full Range
	Nominal Impedance	8 ohm
	Power Handling	400 W RMS
	Peak Power Handling	1600 W PEAK
	Recommended Amplifiers	QPS 6.0K, IPS 2.5K, IPS 1.5K, DMA 504, DMA 162, DMA 162P
Transducers	Woofers	1 x 10", 2.5" v.c
Input/Output section	Input connectors	Euroblock
	Output connectors	Euroblock
Standard compliance	Safety agency	CE compliant
Physical specifications	Cabinet/Case Material	Plywood
	Hardware	12 x M10
	Pole mount/Cap	M20 thread
	Grille	Steel with clothing
	Color	Black
	Size / Weight	Height
	Width	450 mm / 17.72 inches
	Depth	360 mm / 14.17 inches
	Weight	19.6 kg / 43.21 lbs



S 10

BASS REFLEX SUBWOOFER

Upgrade Kits	ACCESSORIES			
	CONNECTION PANELS			
	12399063	PNL IN-OUT AMPHENOL	Black	EAN 8024530020149
	12399062	PNL IN-OUT SPEAKON	Black	EAN 8024530018733