



C-MAX 4112

FULL RANGE HIGH POWER NEARFIELD SPEAKER



Description

The full-range passive two-way speaker RCF C MAX 4112 has been specifically designed as club systems for entertainment, to reach the best near field quality, vocal coherence, and a stable sound pressure level even at high volumes. It features a 12" woofer and a 1" compression driver. The passive C MAX Series speakers represent a further step of the famous COMPACT Series. Thanks to the bass reflex port, perfectly tuned on the back of the cabinet, the system gives its best when installed near walls, without the need of a subwoofer. It's perfect for KTV, Karaoke rooms, conference halls, AV installations, public areas and clubs.

Features

- › 130 dB Max SPL
- › 800 WATT program power handling
- › 60 – 20000 Hz Frequency Range
- › Hi Resolution Custom RCF Precision Transducer
- › Perfectly Tuned Crossover

Part Number

13000535 C-MAX 4112

Black

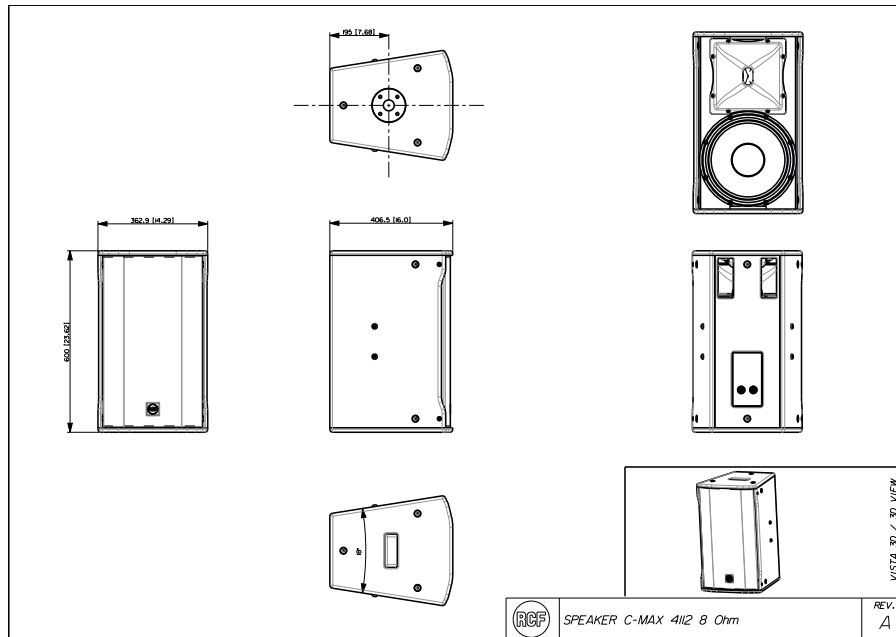
EAN 8024530014681



C-MAX 4112

FULL RANGE HIGH POWER NEARFIELD SPEAKER

Line Art 2D



TECHNICAL SPECIFICATIONS

Acoustical specifications	Frequency Response (-10dB)	60 Hz - 20000 Hz
	Max SPL @ 1m	130 dB
	Horizontal coverage angle	90°
	Vertical coverage angle	70°
	Directivity index Q	11
	System Sensitivity	98 dB
Power section	Amplification	Full Range
	Nominal Impedance	8 ohm
	Power Handling	400 W
	Peak Power Handling	1600 W PEAK
	Protections	Bulb lamp
	Crossover Frequencies	1800 Hz
Transducers	Compression Driver	1 x 1.0" neo, 1.75" v.c
	Woofers	1 x 12", 3.0" v.c
Input/Output section	Input connectors	Speakon® NL4
	Output connectors	Speakon® NL4
Standard compliance	Safety agency	CE compliant
Physical specifications	Cabinet/Case Material	Baltic birch plywood
	Hardware	16 x M10
	Handles	1 Top
	Pole mount/Cap	35 mm insert
	Grille	Steel
	Color	Black



C-MAX 4112

FULL RANGE HIGH POWER NEARFIELD SPEAKER

Size / Weight	Height	600 mm / 23.62 inches
	Width	363 mm / 14.29 inches
	Depth	407 mm / 16.02 inches
	Weight	24.5 kg / 54.01 lbs