

# *Amhaze Stadium 2X IP*

## User Manual



Model ID: AMHAZESTADIUM2XIP

## Edition Notes

The Amhaze Stadium 2X IP User Manual includes a description, safety precautions, installation, programming, operation, and maintenance instructions for the Amhaze Stadium 2X IP as of the release date of this edition.

## Trademarks

Chauvet, Chauvet Professional, the Chauvet logo, and Amhaze, are registered trademarks or trademarks of Chauvet & Sons, LLC (d/b/a Chauvet and Chauvet Lighting) in the United States and other countries. Other company and product names and logos referred to herein may be trademarks of their respective companies.

## Copyright Notice

The works of authorship contained in this manual, including, but not limited to, all designs, text, and images are owned by Chauvet.

© Copyright 2025 Chauvet & Sons, LLC. All rights reserved.

Electronically published by Chauvet in the United States of America.

## Manual Use

Chauvet authorizes its customers to download and print this manual for professional information purposes only. Chauvet expressly prohibits the usage, copy, storage, distribution, modification, or printing of this manual or its content for any other purpose without written consent from Chauvet.

## Document Printing

For best results, print this document in color, on letter size paper (8.5 x 11 in), double-sided. If using A4 paper (210 x 297 mm), configure the printer to scale the content accordingly.

## Intended Audience

Any person installing, operating, and/or maintaining this product should completely read through the guide that shipped with the product, as well as this manual, before installing, operating, or maintaining this product.

## Disclaimer

Chauvet believes that the information contained in this manual is accurate in all respects. However, Chauvet assumes no responsibility and specifically disclaims any and all liability to any party for any loss, damage, or disruption caused by any errors or omissions in this document, whether such errors or omissions result from negligence, accident, or any other cause. Chauvet reserves the right to revise the content of this document without any obligation to notify any person or company of such revision. However, Chauvet has no obligation to make, and does not commit to make, any such revisions.

## Document Revision

Go to [www.chauvetprofessional.com](http://www.chauvetprofessional.com) for the latest version.

Revision	Date	Description
2	07/2025	Updated channel personality chart.

---

## TABLE OF CONTENTS

<b>1. Before You Begin .....</b>	<b>1</b>
What Is Included .....	1
Claims .....	1
Text Conventions .....	1
Symbols .....	1
Safety Notes.....	2
<b>2. Introduction .....</b>	<b>3</b>
Features .....	3
Product Overview.....	3
Product Dimensions .....	4
<b>3. Setup .....</b>	<b>5</b>
AC Power .....	5
AC Plug .....	5
Fuse Replacement .....	5
DMX Linking.....	5
DMX Personalities.....	5
Remote Device Management.....	5
USB Software Update .....	6
Mounting .....	7
Orientation.....	7
Rigging .....	7
Procedure.....	7
<b>4. Operation .....</b>	<b>8</b>
Control Panel Description .....	8
Menu Map .....	8
DMX Configuration.....	8
DMX Channel Assignments and Values .....	8
Standalone Configuration.....	9
Interval .....	9
Duration.....	9
Volume .....	9
Fan .....	9
DMX .....	9
Auto Run Last Settings .....	9
Backlight.....	9
RDM .....	9
Timed Output Operation.....	9
Volume Output Operation .....	9
<b>5. Maintenance.....</b>	<b>10</b>
Fog Machine Maintenance.....	10
Storage.....	10
<b>6. Technical Specifications .....</b>	<b>11</b>
<b>Contact Us .....</b>	<b>12</b>
Warranty & Returns.....	12

## 1. Before You Begin

### What Is Included

- Amhaze Stadium 2X IP
- Seetronic Powerkon IP65 power cable
- 2x Mounting brackets
- Output nozzle assembly
- Front cover
- Quick Reference Guide

### Claims

Carefully unpack the product immediately and check the container to make sure all the parts are in the package and are in good condition.






If the box or the contents (the product and included accessories) appear damaged from shipping, or show signs of mishandling, notify the carrier immediately, not Chauvet. Failure to report damage to the carrier immediately may invalidate a claim. In addition, keep the box and contents for inspection.

For other issues, such as missing components or parts, damage not related to shipping, or concealed damage, file a claim with Chauvet within 7 days of delivery.

### Text Conventions

Convention	Meaning
<b>1–512</b>	A range of values
<b>50/60</b>	A set of values of which only one can be chosen
<b>Settings</b>	A menu option not to be modified
<b>&lt;ENTER&gt;</b>	A key to be pressed on the product's control panel

### Symbols

Symbol	Meaning
	Electrical warning. Not following these instructions may cause electrical damage to the product, accessories, or the user.
	Critical installation, configuration, or operation information. Not following these instructions may make the product not work, cause damage to the product, or cause harm to the operator.
	Pinch point warning. Not following these instructions may result in damage to, or loss of, tools, digits, or limbs.
	Important installation or configuration information. The product may not function correctly if this information is not used.
	Useful information.



Any reference to data or power connections in this manual assumes the use of Seetronic IP-rated cables.

The term “DMX” used throughout this manual refers to the USITT DMX512-A digital data transmission protocol.



Connection of the control signal: DMX line

- The product has XLR sockets for DMX input and output.
- Notice: This control circuit is isolated and belongs to the Class 2 data port. The control circuit has a cumulative leakage current of less than 3.5 mA.

### Safety Notes

Read all the following safety notes before working with this product. These notes contain important information about the installation, usage, and maintenance of this product.



**This product contains no user-serviceable parts. Any reference to servicing in this User Manual will only apply to properly trained, certified technicians. Do not open the housing or attempt any repairs.**

- If the external flexible cable or cord of this product is damaged, it shall be replaced by a special cord or cord exclusively available from the manufacturer or its service agent.
- **CAUTION:**
  - This product's housing may be hot when operating. Mount this product in a location with adequate ventilation, at least 20 in (50 cm) from adjacent surfaces.
  - When transferring the product from extreme temperature environments, (e.g., cold truck to warm humid ballroom) condensation may form on the internal electronics of the product. To avoid causing a failure, allow the product to fully acclimate to the surrounding environment before connecting it to power.
- **ALWAYS:**
  - Disconnect from power before cleaning the product or replacing the fuse.
  - When using an IP65-rated product in an outdoor environment, use IP65- (or higher) rated power and data cable.
  - Replace and secure IP-rated protective covers to all power, data, USB, or other ports when not in use.
  - Use a safety cable when mounting this product overhead.
  - Connect this product to a grounded and protected circuit.
  - Drain the tank before transporting the product.
- **DO NOT:**
  - Open this product. It contains no user-serviceable parts.
  - Leave any flammable material within 30 cm of this product while operating or connected to power.
  - Connect this product to a dimmer or rheostat.
  - Operate this product if the housing, hoses, fluid tank, or cables appear damaged.
  - Submerge this product (adhere to standards for the published IP rating). Regular outdoor operation is fine.
  - Permanently install outdoors in locations with extreme environmental conditions. This includes, but is not limited to:
    - Exposure to a marine/saline environment (within 3 miles of a saltwater body of water).
    - Locations where normal temperatures exceed the temperature ranges in this manual.
    - Locations that are prone to flooding or being buried in snow.
    - Other areas where the product will be subject to extreme radiation or caustic substances.
  - Use for space-heating purposes.
  - Touch the output nozzle on this product. It is very hot during operation, and it may remain hot for several hours after turning the product off.
  - Add anything to the fluid.
  - Drink the fluid.
  - Allow the fluid to contact skin or eyes.
- **ONLY** use approved Chauvet fluids.
- Depending on the amount of fog/haze generated, all fog/haze machines may set off smoke detectors.
- The maximum ambient temperature is 113 °F (45 °C). Do not operate this product at higher temperatures.
- The minimum startup temperature is -4°F (-20°C). Do not start the product at lower temperatures.
- The minimum ambient temperature is -22°F (-30°C). Do not operate the product at lower temperatures.
- To eliminate unnecessary wear and improve its lifespan, during periods of non-use completely disconnect the product from power via breaker or by unplugging it.
- In the event of a serious operating problem, stop using immediately.



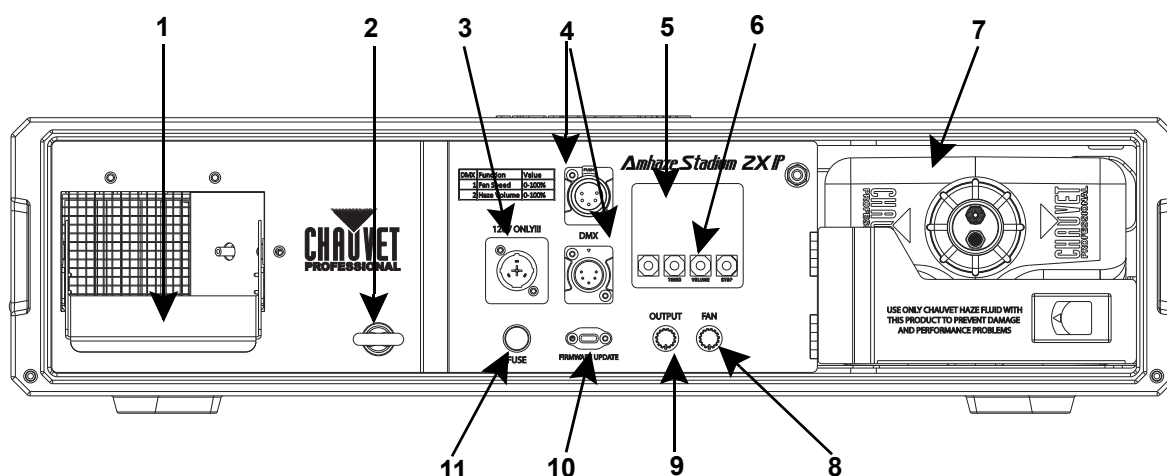
**If this Chauvet product requires service, contact Chauvet Technical Support.**

## 2. Introduction

### Features

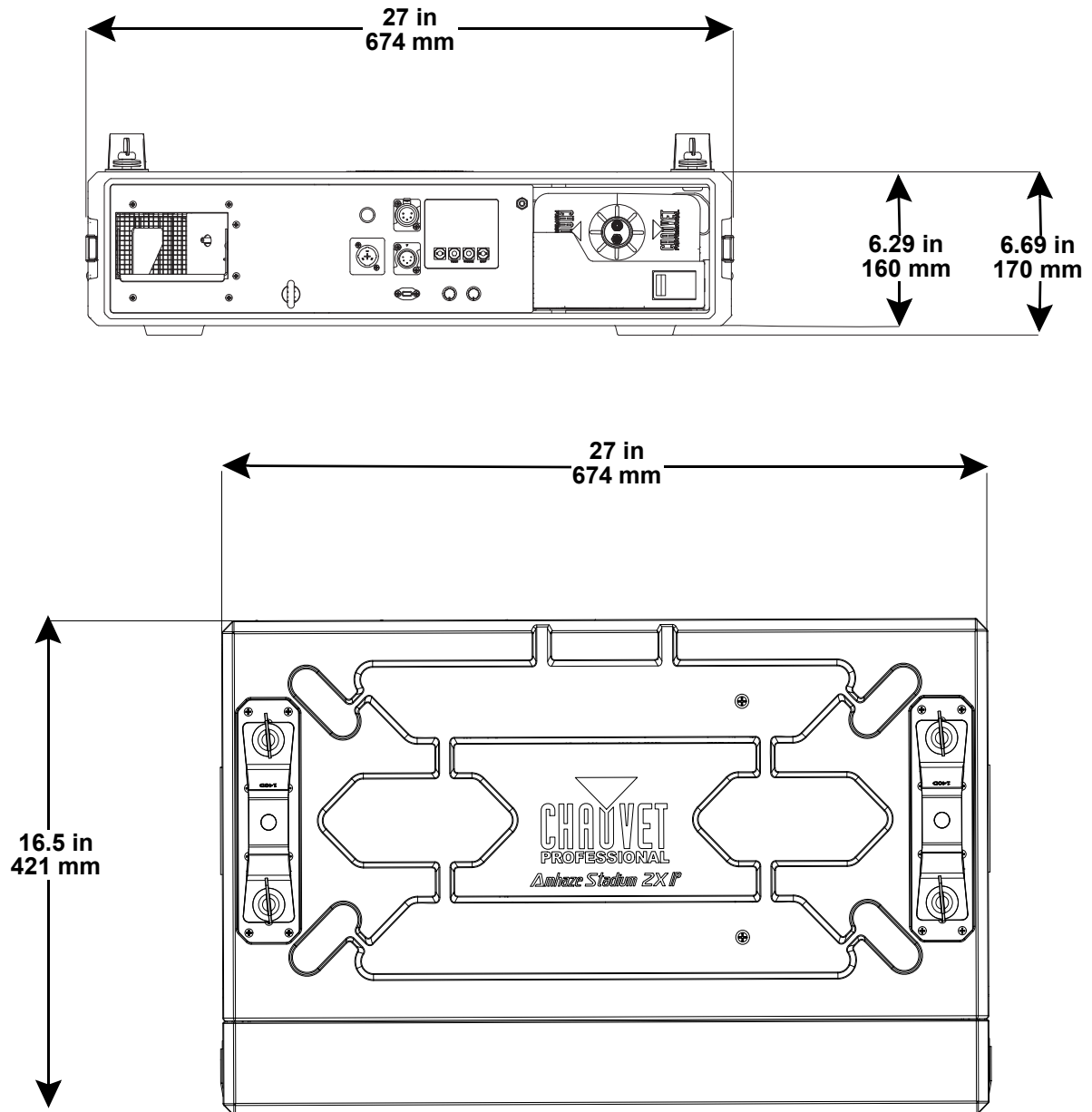
- Compact, professional hazer gives high quality haze for live lighting applications
- Suitable for temporary outdoor/wet use
- Continuous operation produces haze for medium to large applications
- Our innovative, fully serviceable heater assembly is designed for maximum efficiency and longevity. Enjoy easy internal servicing and cleaning, ensuring optimal performance with minimal downtime. Plus, the replaceable heater core extends the product's lifespan while reducing waste—delivering cost savings and sustainability without compromising on reliability.
- Our innovative heater design significantly reduces clogging, ensuring smooth operation, minimal maintenance, and enhanced reliability for long-term performance
- Adjustable vent louver for directional haze flow
- Ships in integrated, rugged flight case, suitable for rental/touring applications with removable front cover with storage for accessories
- Designed for seamless compatibility, this unit utilizes Chauvet's standard 140D Omega Mounting Brackets, allowing for easy integration with standard mounting hardware for quick and secure installation.
- Experience precise control with continuous variable haze output and adjustable blower speed, easily fine-tuned via DMX integration or intuitive manual knobs for seamless customization

### Product Overview



#	Name	#	Name
1	Output nozzle assembly	7	Fluid tank
2	Safety loop	8	Fan control knob
3	Powerkon In	9	Volume control knob
4	5-pin DMX In/out	10	USB type-C port
5	Display	11	Fuse holder
6	Menu buttons		

## Product Dimensions



## 3. Setup

### AC Power

The Amhaze Stadium 2X IP has a fixed power supply that works with an input voltage of either 120 VAC, 60 Hz or 230 VAC, 50 Hz, depending on the specific model.

To determine the product's power requirements (circuit breaker, power outlet, and wiring), use the current value listed on the label affixed to the product's back panel, or refer to the product's specifications chart.

The listed current rating indicates the product's average current draw under normal conditions.



- **Always connect the product to a protected circuit (a circuit breaker or fuse). Ensure the product has an appropriate electrical ground to avoid the risk of electrocution or fire.**
- **To eliminate unnecessary wear and improve its lifespan, during periods of non-use completely disconnect the product from power via breaker or by unplugging it.**



**Never connect the product to a rheostat (variable resistor) or dimmer circuit, even if the rheostat or dimmer channel serves only as a 0 to 100% switch.**

### AC Plug

The Amhaze Stadium 2X IP comes with a power input cable terminated with a Seetronic IP65 Powerkon connector on one end and an Edison plug on the other end (U.S. market). If the power cable which came with the product has no plug, or if it is necessary to change the plug, use the table below to wire a plug..

Connection	Wire (U.S.)	Wire (Europe)	Screw Color
AC Live	Black	Brown	Yellow or Brass
AC Neutral	White	Blue	Silver
AC Ground	Green/Yellow	Green/Yellow	Green

### Fuse Replacement

1. Disconnect this product from the power outlet.
2. Using a flat-head screwdriver, unscrew the fuse holder cap from the housing.
3. Remove the blown fuse and replace with another fuse of the same type and rating (8A, 250 V).
4. Screw the fuse holder cap back in place and reconnect power.

### DMX Linking

The Amhaze Stadium 2X IP can be linked to a DMX controller using a 5-pin DMX connection. If using other DMX-compatible products with this product, it's possible to control each individually with a single DMX controller.

### DMX Personalities

The Amhaze Stadium 2X IP uses a 5-pin DMX data connection for its 2Ch DMX personality.

- The [DMX Channel Assignments and Values](#) section provides detailed information regarding the DMX personality.



**For information about DMX standards, Master/Slave connectivity, or the DMX cables needed to link this product to a DMX controller, download the DMX Primer from the Chauvet website: [www.chauvetprofessional.com](http://www.chauvetprofessional.com).**

### Remote Device Management

Remote Device Management, or RDM, is a standard for allowing DMX-enabled devices to communicate bi-directionally along existing DMX cabling. Check the DMX controller's User Manual or with the manufacturer as not all DMX controllers have this capability. The Amhaze Stadium 2X IP supports RDM protocol that allows feedback to make changes to menu map options.



### USB Software Update

The Amhaze Stadium 2X IP allows for software updates with a USB device using the built-in USB port. To update the software using a USB type C flash drive, do the following:

1. Download the latest software file, APP-OUTDOOR-AMHAZESTADIUM2XIP.bin, onto the root directory of a formatted USB-C flash drive. To locate the file, visit <https://github.com/Chauvet-Pro>.



- **The product's USB port supports up to 32GB capacity and only works with FAT32 file format.**
- **Once the file has been downloaded, the filename cannot be changed.**

2. Insert the USB-C flash drive into the USB-C port of the Amhaze Stadium 2X IP and turn on the product.
3. On the display screen, a progress bar will appear to indicate the status of the ongoing update. The progress is also display as a numerical percentage. Allow time for the software update to be completed.
4. Once the update is complete, a prompt will appear on the display screen to indicate a successful software update.



**The display screen may show an update summary such as APP CONTROL UPDATE, MCU IAP No Update, and Update Success.**

5. The screen will then display the starting menu.
6. Remove the USB-C flash drive from the product.

## Mounting

Before mounting the product, read and follow the safety recommendations indicated in the [Safety Notes](#).

### Orientation

Always mount this product in a safe position, making sure there is adequate room for ventilation, configuration, and maintenance.

### Rigging

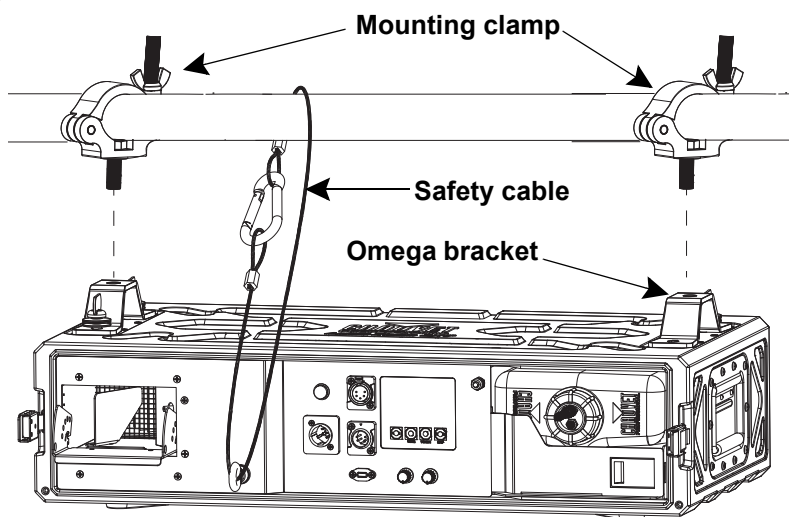
Chauvet recommends using the following general guidelines when mounting this product.

- Before deciding on a location for the product, make sure there is easy access to the product for maintenance and programming purposes.
- Make sure that the structure and attachment points can support the weight before hanging the product (see the [Technical Specifications](#) for weight information).
- When mounting the product overhead, always use a safety cable. Mount the product securely to a rigging point, whether an elevated platform or a truss.
- When rigging the product onto a truss, use a mounting clamp of appropriate weight capacity.
- When power linking multiple products, mount the products close enough for power-linking cables to reach.
- The bracket adjustment knobs allow for directional adjustment when aiming the product to the desired angle. Only loosen or tighten the bracket knobs manually. Using tools could damage the knobs.

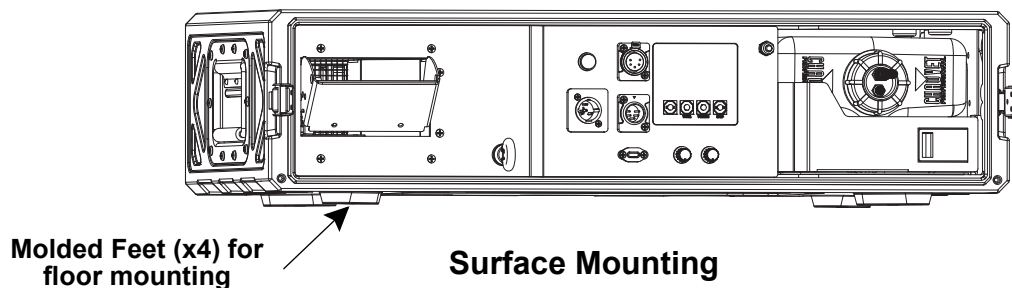
### Procedure

The Amhaze Stadium 2X IP comes with 2x Omega brackets. The user can directly attach a mounting clamp (sold separately) to the Omega brackets. Make sure the clamp is capable of supporting the weight of this product. For the Chauvet Professional line of mounting clamps, go to <http://www.trusst.com/products>.

#### Mounting Diagram



**Overhead Mounting**



## 4. Operation

### Control Panel Description

Button/Knob	Function
<MENU>	Exits from the current menu or function
<UP/TIMER>	<b>UP</b> navigates upwards through the menu list and increases the numeric value when in a function. <b>TIMER</b> starts the timer controlled operation
<DOWN/VOLUME>	<b>DOWN</b> navigates downwards through the menu list and decreases the numeric value when in a function. <b>VOLUME</b> triggers the pump to modify the output volume
<ENTER/STOP>	<b>ENTER</b> enables the currently displayed menu or sets the currently selected value into the selected function. <b>STOP</b> turns the fog output off.
<FAN>	Manually controls the fan speed, 0–100%
<OUTPUT>	Manually controls the haze volume, 0–100%

### Menu Map

Refer to the Amhaze Stadium 2X IP product page on [www.chauvetprofessional.com](http://www.chauvetprofessional.com) for the latest menu map.

Main Level	Programming Levels	Description
INTERVAL SET	5-300S	Sets the interval haze output time
DURATION SET	5-300S	Sets the continuous haze output time
VOLUME OUT	1-100%	Sets the haze volume output
FAN SPEED	0-100%	Sets the air volume output. Fan stops at 0
DMX 512	1–510	Selects the DMX starting address
AUTO RUN LAST SETTINGS	ON	Automatically sets the values to previous selections
	OFF	
BACKLIGHT TIMER	ON	Turns on or off the timer for the LCD display
	OFF	
RDM	-----	Unique RDM identification number

### DMX Configuration

Use control configurations to operate the product with a DMX controller.



- See the [Starting Address](#) section for the highest selectable starting address for each personality.
- Make sure that the starting addresses on the various products do not overlap due to the new personality setting.

### Starting Address

Each product will respond to a unique starting address from the controller. All products with the same starting address will respond in unison. To set the starting address in DMX mode:

1. Go to the **DMX 512** page.
2. Select the starting address (**001–512**).

Personality	Highest Address
2 Ch	511

### DMX Channel Assignments and Values

Channel	Function	Value	Percent/Setting
1	Fan Speed	000 ⇔ 010	No function
		011 ⇔ 255	1–100%, slow to fast
2	Haze Output	000 ⇔ 010	No function
		011 ⇔ 255	1–100%, thin to heavy

## Standalone Configuration

Use standalone configuration to operate the product without a DMX controller.

### Interval

To set the interval time between fog output:

1. Press **<Menu>** to get to the **INTERVAL SET** page.
2. Press the **<UP>** or **<DOWN>** to select the interval smoke spray time, from **(5–300S)**

### Duration

To set the interval fog output time:

1. Press **<Menu>** to get to the **DURATION SET** page.
2. Press the **<UP>** or **<DOWN>** to select the continuous smoke spray time, from **(5–300S)**.

### Volume

To set the interval time between fog output:

1. Press **<Menu>** to get to the **VOLUME OUT** page.
2. Press the **<UP>** or **<DOWN>** to select the smoke volume output, from **1-100%**.

### Fan

To set the air volume output size:

1. Press **<Menu>** to get to the **FAN SPEED** page.
2. Press the **<UP>** or **<DOWN>** to select the air volume output, from **0-100%**. The fan stops working when the value is at **0**.

### DMX

To set the DMX address:

1. Press **<Menu>** to get to the **DMX 512** page.
2. Press the **<UP>** or **<DOWN>** to select the starting address, from **1–510**.

### Auto Run Last Settings

To restore to the last working state after a power failure and restart:

1. Press **<Menu>** to get to the **AUTO RUN LAST SETTING** page.
2. Press the **<UP>** or **<DOWN>** to select from, **OFF** or **ON**.

### Backlight

To control the time duration of the backlight for the LCD display:

1. Press **<Menu>** to get to the **BACKLIGHT TIMER** page.
2. Press the **<UP>** or **<DOWN>** to select from, **OFF** or **ON**.

### RDM

To view the RDM ID:

1. Press **<Menu>** to get to the **RDM** page.
2. The current RDM ID will appear on the screen.

## Timed Output Operation

The Amhaze Stadium 2X IP offers a timed output operation shortcut screen, which allows easier access to some stand alone functions. To navigate to the Timed Output Operation screen:

1. Press **<TIMER>**.
2. Press **<Menu>** repeatedly to select from **Interval** or **Duration**.
3. Press **<UP>** or **<DOWN>** to select the desired value.

## Volume Output Operation

The Amhaze Stadium 2X IP offers a volume output operation shortcut screen, which allows easier access to some stand alone functions. To navigate to the Output Operation screen:

1. Press **<VOLUME>**.
2. Press **<Menu>** repeatedly to select from **Volume Out** or **Fan Speed**.
3. Press **<UP>** or **<DOWN>** to select the desired value.

## 5. Maintenance

### Fog Machine Maintenance

Proper maintenance of Chauvet atmospheric products will increase the reliability and lifespan of products. Maintenance should be completed every 30-90 days, depending on how frequently products are used.



- **When performing maintenance, use Chauvet Fog Cleaner Quart (FCQ) for U.S., or cleaning Fluid 250 (CF250) for EU products. Run the fluid through the system to reduce the accumulation of particulate matter in the heating element.**
- **DO NOT allow the atmospheric product to become clogged. Once a product is clogged, the cleaning procedure is unlikely to effectively clear the clog.**

The recommended cleaning procedure is as follows:

1. Unplug the product from power.
2. Remove the hose from the fluid tank/reservoir. Remove the FCQ/CF250 screw cap and place the hose in the Fog Cleaner bottle.
3. Connect the product to power and allow it to warm up (if not already warmed up).
4. Run the FCQ/CF250 through the product in a well-ventilated area for 60-90 seconds of continuous, full output. Some products require multiple cycles to achieve this.



**DO NOT allow the product to run dry!**

5. Move the hose from the FCQ/CF250 to a small bottle with distilled water (only use distilled water, not tap or any other water or liquid). Run distilled water through the product for at least 30 seconds to clear any remaining cleaning solution from the pump and heater.



- **Turn off the product when not in use or when storing.**
- **DO NOT leave the cleaning solution in the product.**
- **DO NOT operate the product without fluid at any time.**
- **DO NOT leave Chauvet atmospheric fluid in the product tank/reservoir for more than 10 days without use.**



**Fog Cleaner Quart (FCQ) and Cleaning Fluid 250 (CF250) were specifically developed by Chauvet to clean Chauvet atmospheric products equipped with heaters. Use FCQ/CF250 regularly, no longer than 90 days between cleanings (30-60 days if the product is used more frequently), to prevent shortening the life of the product.**

### Storage

Before storing the Chauvet atmospheric product, run FCQ/CF250 through the system as described in the cleaning procedure above and do not refill the tank with atmospheric fluid before storing the product.



**Test-run the Chauvet atmospheric products monthly to achieve the best performance.**

Chauvet does not guarantee products will withstand storage for long durations, even if the cleaning process is followed. Please use caution and test regularly to ensure the product continues to function properly.

## 6. Technical Specifications

### Dimensions and Weight

Length	Width	Height	Weight
27 in (674 mm)	16.5 in (421 mm)	6.69 in (170 mm)	48.8 lb (22.13 kg)

**Note:** Dimensions in inches are rounded.

### Power

Power Supply Type	Range	Voltage Selection
Fixed	230 VAC, 50 Hz 120 VAC, 60 Hz	Fixed
Parameter	120 V, 60 Hz	230 V, 60 Hz
Consumption	511 W	722 W
Operating Current	4.26 A	3.1 A
Fuse	F8 A, 250V	F8 A, 250V
Power I/O	U.S./Worldwide	UK/Europe
Power Input Connector	Seetronic Powerkon IP65	Seetronic Powerkon IP65
Power Cable plug	Edison	Local plug

### Operation/Capacity/Consumption

Fluid Tank Capacity	Fluid Consumption	Heat-up Time	Max Run Time (100% Output)	Required Accessories
1.32 gal (5 l)	9.5 ml/min (0.003 gal/min)	6 minutes	8 hours	PHF

### Thermal

Maximum External Temperature	Cooling System
113 °F (45 °C)	Fan-assisted Convection

### Control

I/O Connector	Channel Range
5-pin XLR	2

### Ordering

Product Name	Item Name	Item Code	UPC Number
Amhaze Stadium 2X IP	AMHAZESTADIUM2XIP	05072593	781462229412
Amhaze Stadium 2X IP	220VAMHAZESTADIUM2XIP	05072679	781462230272



UL 1573  
CSA C22.2 No. 166  
E113093



RoHS



## Contact Us

General Information	Technical Support
<b>Chauvet World Headquarters</b>	
Address: 3360 Davie Rd., Suite 509 Davie, FL 33314 Voice: (954) 577-4455 Fax: (954) 929-5560 Toll Free: (800) 762-1084	Voice: (844) 393-7575 Fax: (954) 756-8015 Email: <a href="mailto:chauvetcs@chauvetlighting.com">chauvetcs@chauvetlighting.com</a> Website: <a href="http://www.chauvetprofessional.com">www.chauvetprofessional.com</a>
<b>Chauvet U.K.</b>	
Address: Pod 1 EVO Park Little Oak Drive, Sherwood Park Nottinghamshire, NG15 0EB UK Voice: +44 (0) 1773 511115 Fax: +44 (0) 1773 511110	Email: <a href="mailto:UKtech@chauvetlighting.eu">UKtech@chauvetlighting.eu</a> Website: <a href="http://www.chauvetprofessional.eu">www.chauvetprofessional.eu</a>
<b>Chauvet Benelux</b>	
Address: Vaartlaan 9 9800 Deinze Belgium Voice: +32 9 388 93 97	Email: <a href="mailto:BNLtech@chauvetlighting.eu">BNLtech@chauvetlighting.eu</a> Website: <a href="http://www.chauvetprofessional.eu">www.chauvetprofessional.eu</a>
<b>Chauvet France</b>	
Address: 3, Rue Ampère 91380 Chilly-Mazarin France Voice: +33 1 78 85 33 59	Email: <a href="mailto:FRtech@chauvetlighting.fr">FRtech@chauvetlighting.fr</a> Website: <a href="http://www.chauvetprofessional.eu">www.chauvetprofessional.eu</a>
<b>Chauvet Germany</b>	
Address: Bruno-Bürgel-Str. 11 28759 Bremen Germany Voice: +49 421 62 60 20	Email: <a href="mailto:DEtech@chauvetlighting.de">DEtech@chauvetlighting.de</a> Website: <a href="http://www.chauvetprofessional.eu">www.chauvetprofessional.eu</a>
<b>Chauvet Mexico</b>	
Address: Av. de las Partidas 34 - 3B (Entrance by Calle 2) Zona Industrial Lerma Lerma, Edo. de México, CP 52000 Voice: +52 (728) 690-2010	Email: <a href="mailto:servicio@chauvet.com.mx">servicio@chauvet.com.mx</a> Website: <a href="http://www.chauvetprofessional.mx">www.chauvetprofessional.mx</a>

## Warranty & Returns

**For warranty terms and conditions and return information, please visit our website.**

For customers in the United States and Mexico: [www.chauvetlighting.com/warranty-registration](http://www.chauvetlighting.com/warranty-registration).

For customers in the United Kingdom, Republic of Ireland, Belgium, the Netherlands, Luxembourg, France, and Germany: [www.chauvetlighting.eu/warranty-registration](http://www.chauvetlighting.eu/warranty-registration).